

ST14 Antibody (C-term)

Affinity Purified Rabbit Polyclonal Antibody (Pab)

Catalog # AP6248a

Product Information

Application	WB, IHC-P, E
Primary Accession	Q9Y5Y6
Other Accession	NP_068813
Reactivity	Human, Mouse
Host	Rabbit
Clonality	Polyclonal
Isotype	Rabbit IgG
Clone Names	RB2080
Calculated MW	94770
Antigen Region	826-855

Additional Information

Gene ID	6768
Other Names	Suppressor of tumorigenicity 14 protein, Matriptase, Membrane-type serine protease 1, MT-SP1, Prostamin, Serine protease 14, Serine protease TADG-15, Tumor-associated differentially-expressed gene 15 protein, ST14, PRSS14, SNC19, TADG15
Target/Specificity	This ST14 antibody is generated from rabbits immunized with a KLH conjugated synthetic peptide between 826-855 amino acids from the C-terminal region of human ST14.
Dilution	WB~~1:1000 IHC-P~~1:100~500 E~~Use at an assay dependent concentration.
Format	Purified polyclonal antibody supplied in PBS with 0.09% (W/V) sodium azide. This antibody is purified through a protein A column, followed by peptide affinity purification.
Storage	Maintain refrigerated at 2-8°C for up to 2 weeks. For long term storage store at -20°C in small aliquots to prevent freeze-thaw cycles.
Precautions	ST14 Antibody (C-term) is for research use only and not for use in diagnostic or therapeutic procedures.

Protein Information

Name	ST14
Synonyms	PRSS14, SNC19, TADG15

Function	Exhibits trypsin-like activity as defined by cleavage of synthetic substrates with Arg or Lys as the P1 site (PubMed: 10373424). Involved in the terminal differentiation of keratinocytes through prostatic (PRSS8) activation and filaggrin (FLG) processing (PubMed: 18843291). Proteolytically cleaves and therefore activates TMPRSS13 (PubMed: 28710277).
Cellular Location	Membrane; Single-pass type II membrane protein

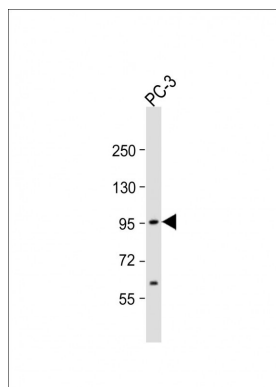
Background

ST14 is an epithelial-derived, integral membrane serine protease. This protease forms a complex with the Kunitz-type serine protease inhibitor, HAI-1, and is found to be activated by sphingosine 1-phosphate. This protease has been shown to cleave and activate hepatocyte growth factor/scattering factor, and urokinase plasminogen activator, which suggest the function of this protease as an epithelial membrane activator for other proteases and latent growth factors. The expression of this protease has been associated with breast, colon, prostate, and ovarian tumors, which implicates its role in cancer invasion, and metastasis.

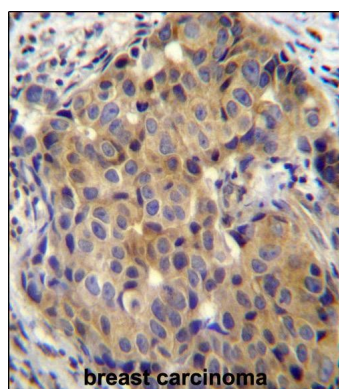
References

Santin, A.D., et al., Cancer 98(9):1898-1904 (2003).
 Oberst, M.D., et al., J. Biol. Chem. 278(29):26773-26779 (2003).
 Ihara, S., et al., J. Biol. Chem. 277(19):16960-16967 (2002).
 Benaud, C.M., et al., Clin. Exp. Metastasis 19(7):639-649 (2002).
 Benaud, C., et al., J. Biol. Chem. 277(12):10539-10546 (2002).

Images



Anti-ST14 Antibody (C-term) at 1:1000 dilution + PC-3 whole cell lysate Lysates/proteins at 20 µg per lane. Secondary Goat Anti-Rabbit IgG, (H+L), Peroxidase conjugated at 1/10000 dilution. Predicted band size : 95 kDa Blocking/Dilution buffer: 5% NFDM/TBST.



ST14 Antibody (C-term) (Cat. #AP6248a) immunohistochemistry analysis in formalin fixed and paraffin embedded human breast carcinoma followed by peroxidase conjugation of the secondary antibody and DAB staining. This data demonstrates the use of ST14 Antibody (C-term) for immunohistochemistry. Clinical relevance has not been evaluated.