

Cdc6 Antibody (N-term)

Affinity Purified Rabbit Polyclonal Antibody (Pab)

Catalog # AP6271a

Product Information

Application	WB, E
Primary Accession	Q99741
Reactivity	Human
Host	Rabbit
Clonality	Polyclonal
Isotype	Rabbit IgG
Clone Names	RB07524
Calculated MW	62720
Antigen Region	32-61

Additional Information

Gene ID	990
Other Names	Cell division control protein 6 homolog, CDC6-related protein, Cdc18-related protein, HsCdc18, p62(cdc6), HsCDC6, CDC6, CDC18L
Target/Specificity	This Cdc6 antibody is generated from rabbits immunized with a KLH conjugated synthetic peptide between 32-61 amino acids from the N-terminal region of human Cdc6.
Dilution	WB~~1:1000 E~~Use at an assay dependent concentration.
Format	Purified polyclonal antibody supplied in PBS with 0.09% (W/V) sodium azide. This antibody is purified through a protein A column, followed by peptide affinity purification.
Storage	Maintain refrigerated at 2-8°C for up to 2 weeks. For long term storage store at -20°C in small aliquots to prevent freeze-thaw cycles.
Precautions	Cdc6 Antibody (N-term) is for research use only and not for use in diagnostic or therapeutic procedures.

Protein Information

Name	CDC6
Synonyms	CDC18L
Function	Involved in the initiation of DNA replication. Also participates in checkpoint controls that ensure DNA replication is completed before mitosis is initiated.

Cellular Location

Nucleus. Cytoplasm Note=The protein is nuclear in G1 and cytoplasmic in S-phase cells (PubMed:9566895).

Background

Human Cdc6 is highly similar to *Saccharomyces cerevisiae* Cdc6, a protein essential for the initiation of DNA replication. This protein functions as a regulator at the early steps of DNA replication. It localizes in cell nucleus during cell cycle G1, but translocates to the cytoplasm at the start of S phase. The subcellular translocation of this protein during cell cycle is regulated through its phosphorylation by Cdk. Transcription of this protein was reported to be regulated in response to mitogenic signals through transcriptional control mechanism involving E2F proteins.

References

Alexandrow, M.G., et al., Mol. Cell. Biol. 24(4):1614-1627 (2004).

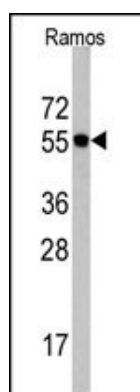
Yim, H., et al., Mol. Biol. Cell 14(10):4250-4259 (2003).

Clay-Farrace, L., et al., EMBO J. 22(3):704-712 (2003).

Pelizon, C., et al., EMBO Rep. 3(8):780-784 (2002).

Bermejo, R., et al., Mol. Biol. Cell 13(11):3989-4000 (2002).

Images



Western blot analysis of Cdc6 Antibody (N-term)(Cat.# AP6271a) in Ramos cell line lysates (35ug/lane). Cdc6 (arrow) was detected using the purified Pab.

Please note: All products are 'FOR RESEARCH USE ONLY. NOT FOR USE IN DIAGNOSTIC OR THERAPEUTIC PROCEDURES'.