

# Cdc25A Antibody (N-term)

Affinity Purified Rabbit Polyclonal Antibody (Pab)

Catalog # AP6272a

## Product Information

---

Application	WB, E
Primary Accession	<a href="#">P30304</a>
Reactivity	Mouse
Host	Rabbit
Clonality	Polyclonal
Isotype	Rabbit IgG
Clone Names	RB07636
Calculated MW	59087

## Additional Information

---

Gene ID	993
Other Names	M-phase inducer phosphatase 1, Dual specificity phosphatase Cdc25A, CDC25A
Target/Specificity	This Cdc25A antibody is generated from rabbits immunized with a KLH conjugated synthetic peptide selected from the N-terminal region of human Cdc25A.
Dilution	WB~~1:1000 E~~Use at an assay dependent concentration.
Format	Purified polyclonal antibody supplied in PBS with 0.05% (V/V) Proclin 300. This antibody is purified through a protein A column, followed by peptide affinity purification.
Storage	Maintain refrigerated at 2-8°C for up to 2 weeks. For long term storage store at -20°C in small aliquots to prevent freeze-thaw cycles.
Precautions	Cdc25A Antibody (N-term) is for research use only and not for use in diagnostic or therapeutic procedures.

## Protein Information

---

Name	CDC25A
Function	Tyrosine protein phosphatase which functions as a dosage- dependent inducer of mitotic progression (PubMed: <a href="#">12676925</a> , PubMed: <a href="#">14559997</a> , PubMed: <a href="#">1836978</a> , PubMed: <a href="#">20360007</a> ). Directly dephosphorylates CDK1 and stimulates its kinase activity (PubMed: <a href="#">20360007</a> ). Also dephosphorylates CDK2 in complex with cyclin-E, in vitro (PubMed: <a href="#">20360007</a> ).

## Background

---

CDC25A is a member of the CDC25 family of phosphatases. CDC25A is required for progression from G1 to the S phase of the cell cycle. It activates the cyclin-dependent kinase CDC2 by removing two phosphate groups. CDC25A is specifically degraded in response to DNA damage, which prevents cells with chromosomal abnormalities from progressing through cell division. CDC25A is an oncogene, although its exact role in oncogenesis has not been demonstrated.

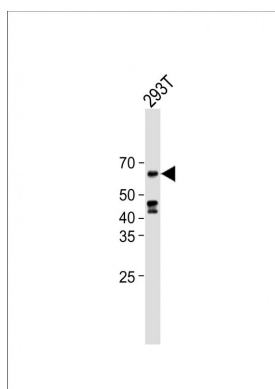
## References

---

Ito, Y., et al., *Int. J. Mol. Med.* 13(3):431-435 (2004).  
Nemoto, K., et al., *Prostate* 58(1):95-102 (2004).  
Goloudina, A., et al., *Cell Cycle* 2(5):473-478 (2003).  
Chen, M.S., et al., *Mol. Cell. Biol.* 23(21):7488-7497 (2003).  
Chow, J.P., et al., *Mol. Biol. Cell* 14(10):3989-4002 (2003).

## Images

---



All lanes: Anti-Cdc25A Antibody (N-term) at 1:1000 dilution + 293T whole cell lysate Lysates/proteins at 20 µg per lane. Secondary: Goat Anti-Rabbit IgG, (H+L), Peroxidase conjugated (ASP1615) at 1/15000 dilution. Observed band size: 60 KDa Blocking/Dilution buffer: 5% NFDM/TBST.

Please note: All products are 'FOR RESEARCH USE ONLY. NOT FOR USE IN DIAGNOSTIC OR THERAPEUTIC PROCEDURES'.