

SOX30 Antibody (Center)

Purified Rabbit Polyclonal Antibody (Pab)

Catalog # AP6278c

Product Information

Application	WB, E
Primary Accession	Q94993
Other Accession	Q8CGW4 , Q8WNV5
Reactivity	Human
Predicted	Monkey
Host	Rabbit
Clonality	Polyclonal
Isotype	Rabbit IgG
Clone Names	RB14027
Calculated MW	81854
Antigen Region	373-403

Additional Information

Gene ID	11063
Other Names	Transcription factor SOX-30, SOX30
Target/Specificity	This SOX30 antibody is generated from rabbits immunized with a KLH conjugated synthetic peptide between 373-403 amino acids from the Central region of human SOX30.
Dilution	WB~~1:1000 E~~Use at an assay dependent concentration.
Format	Purified polyclonal antibody supplied in PBS with 0.09% (W/V) sodium azide. This antibody is prepared by Saturated Ammonium Sulfate (SAS) precipitation followed by dialysis against PBS.
Storage	Maintain refrigerated at 2-8°C for up to 2 weeks. For long term storage store at -20°C in small aliquots to prevent freeze-thaw cycles.
Precautions	SOX30 Antibody (Center) is for research use only and not for use in diagnostic or therapeutic procedures.

Protein Information

Name	SOX30
Function	Acts both as a transcriptional activator and a repressor (PubMed: 10359848 , PubMed: 29739711). Binds to the DNA sequence 5'-ACAAT- 3' and shows a preference for guanine residues surrounding this core motif

(PubMed:[10359848](#)). Binds to its own promoter and activates its own transcription (By similarity). Required to activate the expression of postmeiotic genes involved in spermiogenesis (By similarity). Binds to the promoter region of CTNNB1 and represses its transcription which leads to inhibition of Wnt signaling (PubMed:[29739711](#)). Also inhibits Wnt signaling by binding to the CTNNB1 protein, preventing interaction of CTNNB1 with TCF7L2/TCF4 (PubMed:[29739711](#)).

Cellular Location

Nucleus. Cytoplasm Note=Enriched at the chromocenter.
{ECO:0000250|UniProtKB:Q8CGW4}

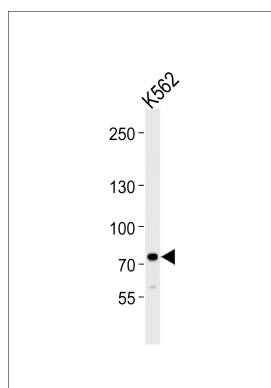
Background

SOX30 is a member of the SOX (SRY-related HMG-box) family of transcription factors involved in the regulation of embryonic development and in the determination of the cell fate. SOX30 may act as a transcriptional regulator after forming a protein complex with other proteins, and it may be involved in the differentiation of developing male germ cells.

References

Koopman,P., Gene 328, 177-186 (2004)
Bullejos,M., Genetica 110 (2), 157-162 (2000)
Osaki,E., Nucleic Acids Res. 27 (12), 2503-2510 (1999)

Images



Western blot analysis of lysate from K562 cell line, using SOX30 Antibody (Center)(Cat. #AP6278c). AP6278c was diluted at 1:1000 at each lane. A goat anti-rabbit IgG H&L(HRP) at 1:5000 dilution was used as the secondary antibody. Lysate at 35ug per lane.

Please note: All products are 'FOR RESEARCH USE ONLY. NOT FOR USE IN DIAGNOSTIC OR THERAPEUTIC PROCEDURES'.