

VEGFD (VEGF4) Antibody (C-term)

Purified Rabbit Polyclonal Antibody (Pab)

Catalog # AP6292B

Product Information

Application	WB, IHC-P, E
Primary Accession	O43915
Reactivity	Human
Host	Rabbit
Clonality	Polyclonal
Isotype	Rabbit IgG
Calculated MW	40444
Antigen Region	322-352

Additional Information

Gene ID	2277
Other Names	Vascular endothelial growth factor D, VEGF-D, c-Fos-induced growth factor, FIGF, FIGF, VEGFD
Target/Specificity	This VEGFD (VEGF4) antibody is generated from rabbits immunized with a KLH conjugated synthetic peptide between 322-352 amino acids from the C-terminal region of human VEGFD (VEGF4).
Dilution	WB~~1:1000 IHC-P~~1:100~500 E~~Use at an assay dependent concentration.
Format	Purified polyclonal antibody supplied in PBS with 0.09% (W/V) sodium azide. This antibody is prepared by Saturated Ammonium Sulfate (SAS) precipitation followed by dialysis against PBS.
Storage	Maintain refrigerated at 2-8°C for up to 2 weeks. For long term storage store at -20°C in small aliquots to prevent freeze-thaw cycles.
Precautions	VEGFD (VEGF4) Antibody (C-term) is for research use only and not for use in diagnostic or therapeutic procedures.

Protein Information

Name	VEGFD (HGNC:3708)
Synonyms	FIGF
Function	Growth factor active in angiogenesis, lymphangiogenesis and endothelial cell growth, stimulating their proliferation and migration and also has effects on the permeability of blood vessels. May function in the formation of the

venous and lymphatic vascular systems during embryogenesis, and also in the maintenance of differentiated lymphatic endothelium in adults. Binds and activates VEGFR-2 (KDR/FLK1) and VEGFR-3 (FLT4) receptors.

Cellular Location

Secreted.

Tissue Location

Highly expressed in lung, heart, small intestine and fetal lung, and at lower levels in skeletal muscle, colon, and pancreas

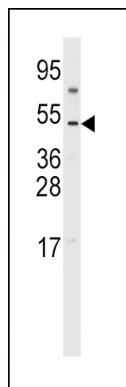
Background

The protein encoded by this gene is a member of the platelet-derived growth factor/vascular endothelial growth factor (PDGF/VEGF) family and is active in angiogenesis, lymphangiogenesis, and endothelial cell growth. This secreted protein undergoes a complex proteolytic maturation, generating multiple processed forms which bind and activate VEGFR-2 and VEGFR-3 receptors. This protein is structurally and functionally similar to vascular endothelial growth factor C.

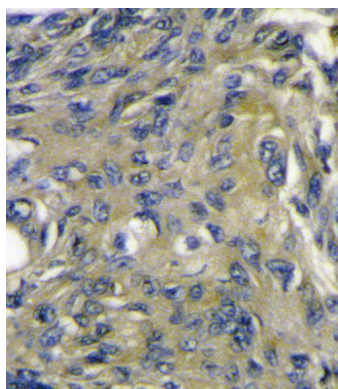
References

Orlandini, M., et al., J. Biol. Chem. 278(45):44650-44656 (2003).
McColl, B.K., et al., J. Exp. Med. 198(6):863-868 (2003).
Rissanen, T.T., et al., Circ. Res. 92(10):1098-1106 (2003).
Nakamura, Y., et al., Clin. Cancer Res. 9(2):716-721 (2003).
Yokoyama, Y., et al., Br. J. Cancer 88(2):237-244 (2003).

Images



Western blot analysis of anti-VEGF4 Antibody (C-term) Pab (AP6292b) in 293 cell line lysates. VEGF4 Antibody (C-term)(arrow) was detected using the purified Pab.



VEGFD (VEGF4) Antibody (C-term) (Cat. #AP6292B)immunohistochemistry analysis in formalin fixed and paraffin embedded mouse heart tissue followed by peroxidase conjugation of the secondary antibody and DAB staining.This data demonstrates the use of VEGFD (VEGF4) Antibody (C-term) for immunohistochemistry. Clinical relevance has not been evaluated.

Citations

- [Anti-metastatic Efficacy of Traditional Chinese Medicine \(TCM\) Ginsenoside Conjugated to a VEGFR-3 Antibody on Human Gastric Cancer in an Orthotopic Mouse Model.](#)

Please note: All products are 'FOR RESEARCH USE ONLY. NOT FOR USE IN DIAGNOSTIC OR THERAPEUTIC PROCEDURES'.