

# Cleaved-C1s HC (R437) Polyclonal Antibody

Catalog # AP63095

## Product Information

Application	WB, E
Primary Accession	<a href="#">P09871</a>
Reactivity	Human, Rat, Mouse
Host	Rabbit
Clonality	Polyclonal
Calculated MW	76684

## Additional Information

Gene ID	716
Other Names	C1S; Complement C1s subcomponent; C1 esterase; Complement component 1 subcomponent s
Dilution	WB~~Western Blot: 1/500 - 1/2000. ELISA: 1/20000. Not yet tested in other applications. E~~N/A
Format	Liquid in PBS containing 50% glycerol, 0.5% BSA and 0.09% (W/V) sodium azide.
Storage Conditions	-20°C

## Protein Information

Name	C1S {ECO:0000303   PubMed:3500856, ECO:0000312   HGNC:HGNC:1247}
Function	<p>Component of the complement C1 complex, a multiprotein complex that initiates the classical pathway of the complement system, a cascade of proteins that leads to phagocytosis and breakdown of pathogens and signaling that strengthens the adaptive immune system (PubMed:<a href="#">11445589</a>, PubMed:<a href="#">16169853</a>, PubMed:<a href="#">417728</a>, PubMed:<a href="#">467643</a>, PubMed:<a href="#">6271784</a>, PubMed:<a href="#">6282646</a>, PubMed:<a href="#">6319179</a>, PubMed:<a href="#">70787</a>, PubMed:<a href="#">9422791</a>). C1S is activated following association of the C1 complex with immunoglobulins (IgG or IgM) complexed with antigens to form antigen-antibody complexes on the surface of pathogens (PubMed:<a href="#">34155115</a>). C1S is cleaved and activated by C1R to generate C1s subcomponent heavy and light chains (PubMed:<a href="#">11445589</a>, PubMed:<a href="#">6271784</a>). C1s subcomponent light chain then cleaves and activates C2 and C4, the next components of the classical complement pathway (PubMed:<a href="#">16169853</a>, PubMed:<a href="#">467643</a>, PubMed:<a href="#">6282646</a>, PubMed:<a href="#">6319179</a>, PubMed:<a href="#">6906228</a>, PubMed:<a href="#">70787</a>, PubMed:<a href="#">9422791</a>).</p>
Cellular Location	Secreted. Cell surface. Note=Recruited to the surface of pathogens by the C1Q

subcomplex.

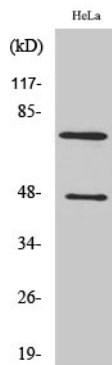
## Background

---

C1s B chain is a serine protease that combines with C1q and C1r to form C1, the first component of the classical pathway of the complement system. C1r activates C1s so that it can, in turn, activate C2 and C4.

## Images

---



Western Blot analysis of various cells using Cleaved-C1s HC (R437) Polyclonal Antibody

Please note: All products are 'FOR RESEARCH USE ONLY. NOT FOR USE IN DIAGNOSTIC OR THERAPEUTIC PROCEDURES'.