

Cleaved-COL1A2 (G1102) Polyclonal Antibody

Catalog # AP63124

Product Information

Application	WB
Primary Accession	P08123
Reactivity	Human
Host	Rabbit
Clonality	Polyclonal
Calculated MW	129314

Additional Information

Gene ID	1278
Other Names	COL1A2; Collagen alpha-2(I) chain; Alpha-2 type I collagen
Dilution	WB~~Western Blot: 1/500 - 1/2000. ELISA: 1/10000. Not yet tested in other applications.
Format	Liquid in PBS containing 50% glycerol, 0.5% BSA and 0.09% (W/V) sodium azide.
Storage Conditions	-20°C

Protein Information

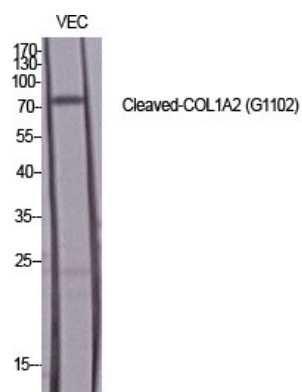
Name	COL1A2
Function	Type I collagen is a member of group I collagen (fibrillar forming collagen).
Cellular Location	Secreted, extracellular space, extracellular matrix {ECO:0000255 PROSITE-ProRule:PRU00793}
Tissue Location	Forms the fibrils of tendon, ligaments and bones. In bones the fibrils are mineralized with calcium hydroxyapatite

Background

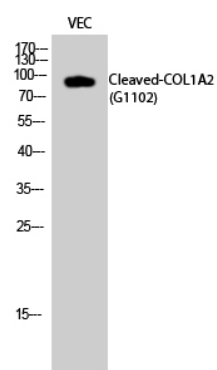
Type I collagen is a member of group I collagen (fibrillar forming collagen).

Images

Western Blot analysis of various cells using



Cleaved-COL1A2 (G1102) Polyclonal Antibody diluted at 1 : 1000



Western Blot analysis of VEC cells using Cleaved-COL1A2 (G1102) Polyclonal Antibody diluted at 1 : 1000

Please note: All products are 'FOR RESEARCH USE ONLY. NOT FOR USE IN DIAGNOSTIC OR THERAPEUTIC PROCEDURES'.