

Cleaved-MMP-12 (G106) Polyclonal Antibody

Catalog # AP63135

Product Information

Application	WB
Primary Accession	P39900
Reactivity	Human
Host	Rabbit
Clonality	Polyclonal
Calculated MW	54002

Additional Information

Gene ID	4321
Other Names	MMP12; HME; Macrophage metalloelastase; MME; Macrophage elastase; ME; hME; Matrix metalloproteinase-12; MMP-12
Dilution	WB~~Western Blot: 1/500 - 1/2000. ELISA: 1/20000. Not yet tested in other applications.
Format	Liquid in PBS containing 50% glycerol, 0.5% BSA and 0.09% (W/V) sodium azide.
Storage Conditions	-20°C

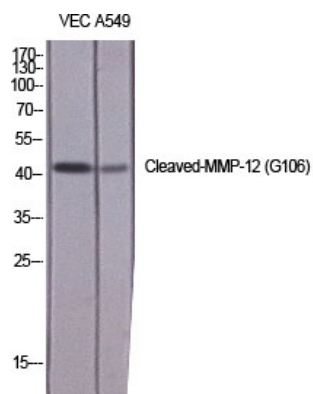
Protein Information

Name	MMP12
Synonyms	HME
Function	May be involved in tissue injury and remodeling. Has significant elastolytic activity. Can accept large and small amino acids at the P1' site, but has a preference for leucine. Aromatic or hydrophobic residues are preferred at the P1 site, with small hydrophobic residues (preferably alanine) occupying P3.
Cellular Location	Secreted, extracellular space, extracellular matrix
Tissue Location	Found in alveolar macrophages but not in peripheral blood monocytes

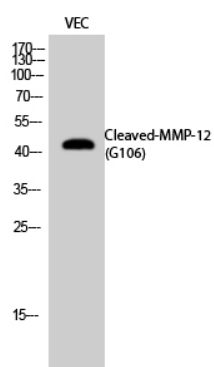
Background

May be involved in tissue injury and remodeling. Has significant elastolytic activity. Can accept large and small amino acids at the P1' site, but has a preference for leucine. Aromatic or hydrophobic residues are preferred at the P1 site, with small hydrophobic residues (preferably alanine) occupying P3.

Images



Western Blot analysis of various cells using
Cleaved-MMP-12 (G106) Polyclonal Antibody diluted at
1 : 1000



Western Blot analysis of VEC cells using Cleaved-MMP-12
(G106) Polyclonal Antibody diluted at 1 : 1000

Please note: All products are 'FOR RESEARCH USE ONLY. NOT FOR USE IN DIAGNOSTIC OR THERAPEUTIC PROCEDURES'.