

# Cleaved-MMP-14 (Y112) Polyclonal Antibody

Catalog # AP63136

## Product Information

Application	WB
Primary Accession	<a href="#">P50281</a>
Reactivity	Human, Mouse, Rat
Host	Rabbit
Clonality	Polyclonal
Calculated MW	65894

## Additional Information

Gene ID	4323
Other Names	MMP14; Matrix metalloproteinase-14; MMP-14; MMP-X1; Membrane-type matrix metalloproteinase 1; MT-MMP 1; MTMMP1; Membrane-type-1 matrix metalloproteinase; MT1-MMP; MT1MMP
Dilution	WB~~Western Blot: 1/500 - 1/2000. ELISA: 1/20000. Not yet tested in other applications.
Format	Liquid in PBS containing 50% glycerol, 0.5% BSA and 0.09% (W/V) sodium azide.
Storage Conditions	-20°C

## Protein Information

Name	MMP14
Function	Endopeptidase that degrades various components of the extracellular matrix such as collagen (PubMed: <a href="#">8015608</a> ). Essential for pericellular collagenolysis and modeling of skeletal and extraskelatal connective tissues during development (By similarity). Activates progelatinase A/MMP2, thereby acting as a positive regulator of cell growth and migration (PubMed: <a href="#">22065321</a> , PubMed: <a href="#">8015608</a> ). Involved in the formation of the fibrovascular tissues in association with pro-MMP2 (PubMed: <a href="#">12714657</a> , PubMed: <a href="#">22065321</a> ). May be involved in actin cytoskeleton reorganization by cleaving PTK7 (PubMed: <a href="#">20837484</a> ). Acts as a regulator of Notch signaling by mediating cleavage and inhibition of DLL1 (PubMed: <a href="#">21572390</a> ). Cleaves ADGRB1 to release vasculostatin-40 which inhibits angiogenesis (PubMed: <a href="#">22330140</a> ). Acts as a negative regulator of the GDF15-GFRAL aversive response by mediating cleavage and inactivation of GFRAL (PubMed: <a href="#">35177851</a> ).
Cellular Location	Cell membrane; Single-pass type I membrane protein. Melanosome. Cytoplasm Note=Identified by mass spectrometry in melanosome fractions

from stage I to stage IV (PubMed:17081065). Forms a complex with BST2 and localizes to the cytoplasm (PubMed:17081065)

#### Tissue Location

Expressed in stromal cells of colon, breast, and head and neck. Expressed in lung tumors.

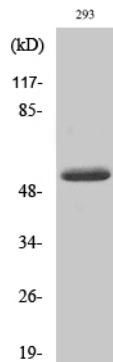
## Background

---

Endopeptidase that degrades various components of the extracellular matrix such as collagen. Activates progelatinase A. Essential for pericellular collagenolysis and modeling of skeletal and extraskelatal connective tissues during development (By similarity). May be involved in actin cytoskeleton reorganization by cleaving PTK7 (PubMed:[20837484](#)). Acts as a positive regulator of cell growth and migration via activation of MMP15. Involved in the formation of the fibrovascular tissues in association with pro-MMP2 (PubMed:[12714657](#)). Cleaves ADGRB1 to release vasculostatin-40 which inhibits angiogenesis (PubMed:[22330140](#)).

## Images

---



Western Blot analysis of various cells using Cleaved-MMP-14 (Y112) Polyclonal Antibody

Please note: All products are 'FOR RESEARCH USE ONLY. NOT FOR USE IN DIAGNOSTIC OR THERAPEUTIC PROCEDURES'.