

Cleaved-MMP-15 (Y132) Polyclonal Antibody

Catalog # AP63137

Product Information

Application	WB
Primary Accession	P51511
Reactivity	Human, Monkey
Host	Rabbit
Clonality	Polyclonal
Calculated MW	75807

Additional Information

Gene ID	4324
Other Names	MMP15; Matrix metalloproteinase-15; MMP-15; Membrane-type matrix metalloproteinase 2; MT-MMP 2; MTMMP2; Membrane-type-2 matrix metalloproteinase; MT2-MMP; MT2MMP; SMCP-2
Dilution	WB~~Western Blot: 1/500 - 1/2000. ELISA: 1/10000. Not yet tested in other applications.
Format	Liquid in PBS containing 50% glycerol, 0.5% BSA and 0.09% (W/V) sodium azide.
Storage Conditions	-20°C

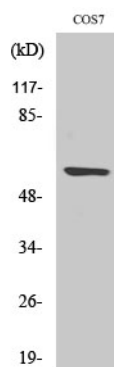
Protein Information

Name	MMP15
Function	Endopeptidase that degrades various components of the extracellular matrix. May activate progelatinase A.
Cellular Location	Membrane; Single-pass type I membrane protein; Extracellular side
Tissue Location	Appeared to be synthesized preferentially in liver, placenta, testis, colon and intestine. Substantial amounts are also detected in pancreas, kidney, lung, heart and skeletal muscle

Background

Endopeptidase that degrades various components of the extracellular matrix. May activate progelatinase A.

Images



Western Blot analysis of various cells using
Cleaved-MMP-15 (Y132) Polyclonal Antibody

Please note: All products are 'FOR RESEARCH USE ONLY. NOT FOR USE IN DIAGNOSTIC OR THERAPEUTIC PROCEDURES'.