

Cleaved-MMP-27 (Y99) Polyclonal Antibody

Catalog # AP63140

Product Information

Application	WB
Primary Accession	Q9H306
Reactivity	Human, Monkey
Host	Rabbit
Clonality	Polyclonal
Calculated MW	59026

Additional Information

Gene ID	64066
Other Names	MMP27; Matrix metalloproteinase-27; MMP-27
Dilution	WB~~Western Blot: 1/500 - 1/2000. ELISA: 1/10000. Not yet tested in other applications.
Format	Liquid in PBS containing 50% glycerol, 0.5% BSA and 0.09% (W/V) sodium azide.
Storage Conditions	-20°C

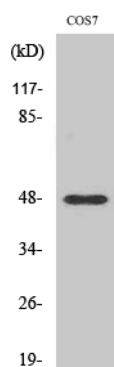
Protein Information

Name	MMP27
Function	Matrix metalloproteinases degrade protein components of the extracellular matrix such as fibronectin, laminin, gelatins and/or collagens.
Cellular Location	Endoplasmic reticulum. Note=Retained in the endoplasmic reticulum due to a C-terminal extension (CTE)
Tissue Location	Expressed in B-cells (PubMed:14506071). Expressed in a subset of endometrial macrophages related to menstruation and in ovarian and peritoneal endometriotic lesions (at protein level) (PubMed:24810263).

Background

Matrix metalloproteinases degrade protein components of the extracellular matrix such as fibronectin, laminin, gelatins and/or collagens.

Images



Western Blot analysis of various cells using
Cleaved-MMP-27 (Y99) Polyclonal Antibody

Please note: All products are 'FOR RESEARCH USE ONLY. NOT FOR USE IN DIAGNOSTIC OR THERAPEUTIC PROCEDURES'.