

# Cleaved-Spectrin $\alpha$ II (D1185) Polyclonal Antibody

Catalog # AP63149

## Product Information

---

Application	WB
Primary Accession	<a href="#">Q13813</a>
Reactivity	Human
Host	Rabbit
Clonality	Polyclonal
Calculated MW	284539

## Additional Information

---

Gene ID	6709
Other Names	SPTAN1; NEAS; SPTA2; Spectrin alpha chain; non-erythrocytic 1; Alpha-II spectrin; Fodrin alpha chain; Spectrin, non-erythroid alpha subunit
Dilution	WB~~Western Blot: 1/500 - 1/2000. ELISA: 1/10000. Not yet tested in other applications.
Format	Liquid in PBS containing 50% glycerol, 0.5% BSA and 0.09% (W/V) sodium azide.
Storage Conditions	-20°C

## Protein Information

---

Name	SPTAN1
Synonyms	NEAS, SPTA2
Function	Fodrin, which seems to be involved in secretion, interacts with calmodulin in a calcium-dependent manner and is thus candidate for the calcium-dependent movement of the cytoskeleton at the membrane.
Cellular Location	Cytoplasm, cytoskeleton. Cytoplasm, cell cortex. Note=Expressed along the cell membrane in podocytes and presumptive tubule cells during glomerulogenesis and is expressed along lateral cell margins in tubule cells.

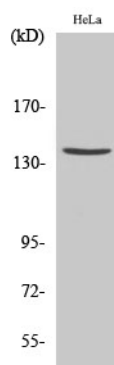
## Background

---

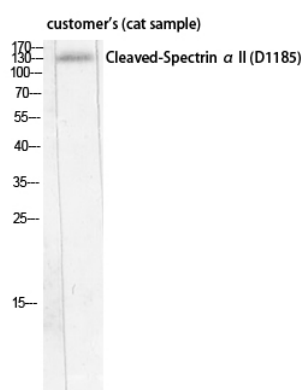
Fodrin, which seems to be involved in secretion, interacts with calmodulin in a calcium-dependent manner and is thus candidate for the calcium-dependent movement of the cytoskeleton at the membrane.

## Images

---



Western Blot analysis of various cells using  
Cleaved-Spectrin  $\alpha$  II (D1185) Polyclonal Antibody diluted  
at 1 : 500



Western Blot analysis of customer's (cat sample) using  
Cleaved-Spectrin  $\alpha$  II (D1185) Polyclonal Antibody diluted  
at 1 : 500

Please note: All products are 'FOR RESEARCH USE ONLY. NOT FOR USE IN DIAGNOSTIC OR THERAPEUTIC PROCEDURES'.