

Cleaved-Tumstatin (P1426) Polyclonal Antibody

Catalog # AP63153

Product Information

Application	WB, E
Primary Accession	Q01955
Reactivity	Human, Monkey
Host	Rabbit
Clonality	Polyclonal
Calculated MW	161813

Additional Information

Gene ID	1285
Other Names	COL4A3; Collagen alpha-3(IV) chain; Goodpasture antigen
Dilution	WB~~Western Blot: 1/500 - 1/2000. ELISA: 1/40000. Not yet tested in other applications. E~~N/A
Format	Liquid in PBS containing 50% glycerol, 0.5% BSA and 0.09% (W/V) sodium azide.
Storage Conditions	-20°C

Protein Information

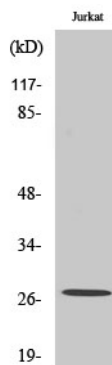
Name	COL4A3
Function	Type IV collagen is the major structural component of glomerular basement membranes (GBM), forming a 'chicken-wire' meshwork together with laminins, proteoglycans and entactin/nidogen.
Cellular Location	Secreted, extracellular space, extracellular matrix, basement membrane. Note=Colocalizes with COL4A4 and COL4A5 in GBM, tubular basement membrane (TBM) and synaptic basal lamina (BL)
Tissue Location	Alpha 3 and alpha 4 type IV collagens are colocalized and present in kidney, eye, basement membranes of lens capsule, cochlea, lung, skeletal muscle, aorta, synaptic fibers, fetal kidney and fetal lung. PubMed:8083201 reports similar levels of expression of alpha 3 and alpha 4 type IV collagens in kidney, but PubMed:7523402 reports that in kidney levels of alpha 3 type IV collagen are significantly lower than those of alpha 4 type IV collagen. According to PubMed:8083201, alpha 3 type IV collagen is not detected in heart, brain, placenta, liver, pancreas, extrasynaptic muscle fibers, endoneurial and perineurial nerves, fetal brain, fetal heart and fetal liver. According to PubMed:7523402, alpha 3 type IV collagen is strongly expressed in pancreas,

neuroretina and calvaria and not expressed in adrenal, ileum and skin. Isoform 1 and isoform 3 are strongly expressed in kidney, lung, suprarenal capsule, muscle and spleen, in each of these tissues isoform 1 is more abundant than isoform 3. Isoform 1 and isoform 3 are expressed at low levels in artery, fat, pericardium and peripheral nerve, but not in placenta, mesangium, skin, pleura and cultured umbilical endothelial cells

Background

Type IV collagen is the major structural component of glomerular basement membranes (GBM), forming a 'chicken-wire' meshwork together with laminins, proteoglycans and entactin/nidogen.

Images



Western Blot analysis of various cells using
Cleaved-Tumstatin (P1426) Polyclonal Antibody

Please note: All products are 'FOR RESEARCH USE ONLY. NOT FOR USE IN DIAGNOSTIC OR THERAPEUTIC PROCEDURES'.