

# Cleaved-Plasma Kallikrein HC (R390) Polyclonal Antibody

Catalog # AP63177

## Product Information

---

<b>Application</b>	WB, IHC-P
<b>Primary Accession</b>	<a href="#">P03952</a>
<b>Reactivity</b>	Human
<b>Host</b>	Rabbit
<b>Clonality</b>	Polyclonal
<b>Calculated MW</b>	71343

## Additional Information

---

<b>Gene ID</b>	3818
<b>Other Names</b>	KLKB1; KLK3; Plasma kallikrein; Fletcher factor; Kininogenin; Plasma prekallikrein
<b>Dilution</b>	WB~~Western Blot: 1/500 - 1/2000. Immunohistochemistry: 1/100 - 1/300. ELISA: 1/10000. Not yet tested in other applications. IHC-P~~N/A
<b>Format</b>	Liquid in PBS containing 50% glycerol, 0.5% BSA and 0.09% (W/V) sodium azide.
<b>Storage Conditions</b>	-20°C

## Protein Information

---

<b>Name</b>	KLKB1
<b>Synonyms</b>	KLK3
<b>Function</b>	Participates in the surface-dependent activation of blood coagulation. Activates, in a reciprocal reaction, coagulation factor XII/F12 after binding to negatively charged surfaces. Releases bradykinin from HMW kininogen and may also play a role in the renin- angiotensin system by converting prorenin into renin.
<b>Cellular Location</b>	Secreted.
<b>Tissue Location</b>	Found in plasma (at protein level).

## Background

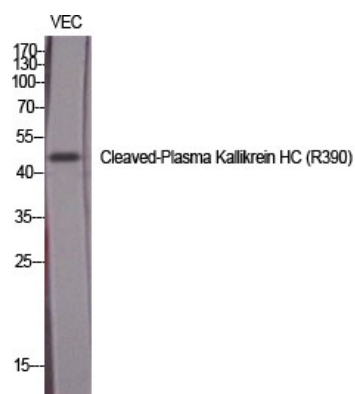
---

The enzyme cleaves Lys-Arg and Arg-Ser bonds. It activates, in a reciprocal reaction, factor XII after its binding to a negatively charged surface. It also releases bradykinin from HMW kininogen and may also play

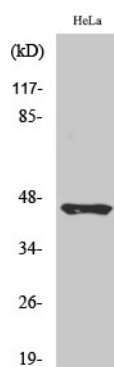
a role in the renin-angiotensin system by converting prorenin into renin.

## Images

---



Western Blot analysis of various cells using  
Cleaved-Plasma Kallikrein HC (R390) Polyclonal Antibody  
diluted at 1 : 1000



Western Blot analysis of HeLa cells using Cleaved-Plasma  
Kallikrein HC (R390) Polyclonal Antibody diluted at  
1 : 1000

Please note: All products are 'FOR RESEARCH USE ONLY. NOT FOR USE IN DIAGNOSTIC OR THERAPEUTIC PROCEDURES'.