

# Caspase 10 (p23/17, Cleaved-Val220) Antibody

Catalog # AP63182

## Product Information

Application	WB, E
Primary Accession	<a href="#">Q92851</a>
Reactivity	Human, Mouse, Rat
Host	Rabbit
Clonality	Polyclonal
Calculated MW	58951

## Additional Information

Gene ID	843
Other Names	Caspase-10 (CASP-10) (EC 3.4.22.63) (Apoptotic protease Mch-4) (FAS-associated death domain protein interleukin-1B-converting enzyme 2) (FLICE2) (ICE-like apoptotic protease 4) [Cleaved into: Caspase-10 subunit p23/17; Caspase-10 subunit p12]
Dilution	WB~~WB 1:500-2000, ELISA(peptide)1:5000-20000 E~~N/A
Format	Liquid in PBS containing 50% glycerol, 0.5% BSA and 0.09% (W/V) sodium azide.
Storage Conditions	-20°C

## Protein Information

Name	CASP10
Synonyms	MCH4
Function	Involved in the activation cascade of caspases responsible for apoptosis execution. Recruited to both Fas- and TNFR-1 receptors in a FADD dependent manner. May participate in the granzyme B apoptotic pathways. Cleaves and activates effector caspases CASP3, CASP4, CASP6, CASP7, CASP8 and CASP9. Hydrolyzes the small- molecule substrates, Tyr- Val-Ala-Asp- -AMC and Asp-Glu-Val-Asp- -AMC.
Tissue Location	Detectable in most tissues. Lowest expression is seen in brain, kidney, prostate, testis and colon

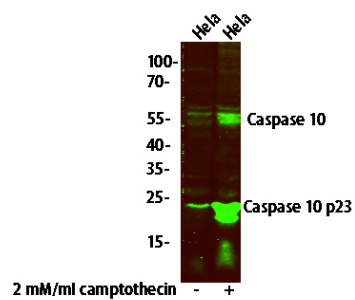
## Background

Involved in the activation cascade of caspases responsible for apoptosis execution. Recruited to both Fas-

and TNFR-1 receptors in a FADD dependent manner. May participate in the granzyme B apoptotic pathways. Cleaves and activates caspase- 3, -4, -6, -7, -8, and -9. Hydrolyzes the small- molecule substrates, Tyr-Val-Ala-Asp-|-AMC and Asp-Glu-Val-Asp-|-AMC.

## Images

---



Western blot analysis of HeLa cell treated or untreated with 2 mM/ml camptothecin , primary antibody was diluted at 1:1000, 4° over night, secondary antibody(cat : RS23920)was diluted at 1:10000, 37° 1 hour.

Please note: All products are 'FOR RESEARCH USE ONLY. NOT FOR USE IN DIAGNOSTIC OR THERAPEUTIC PROCEDURES'.