

# NF-E4 (Acetyl Lys43) Polyclonal Antibody

Catalog # AP63246

## Product Information

---

Application	WB
Primary Accession	<a href="#">Q86UQ8</a>
Reactivity	Human
Host	Rabbit
Clonality	Polyclonal
Calculated MW	19019

## Additional Information

---

Other Names	NFE4; Transcription factor NF-E4
Dilution	WB~~Western Blot: 1/500 - 1/2000. ELISA: 1/20000. Not yet tested in other applications.
Format	Liquid in PBS containing 50% glycerol, 0.5% BSA and 0.09% (W/V) sodium azide.
Storage Conditions	-20°C

## Protein Information

---

Name	NFE4
Function	Functions as part of the SSP (stage selector protein) complex, a complex that contributes to the preferential expression of the gamma-gene in fetal erythroid cells by facilitating the interaction of the gamma-globin genes with enhancer elements contained in the locus control region (LCR). The complex binds to the stage selector element (SSE) in the proximal gamma-globin promoter. In contrast, isoform 2 acts as a repressor of gamma-globin gene expression by preventing NFE2 and RNA polymerase II recruitment to the promoter.
Cellular Location	Nucleus.
Tissue Location	Specifically expressed in fetal liver, cord blood and bone marrow. Also expressed in the K562 and HEL cell lines, which constitutively express the fetal globin genes

## Background

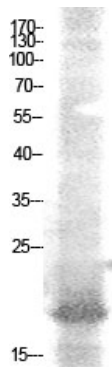
---

Functions as part of the SSP (stage selector protein) complex, a complex that contributes to the preferential expression of the gamma-gene in fetal erythroid cells by facilitating the interaction of the gamma-globin

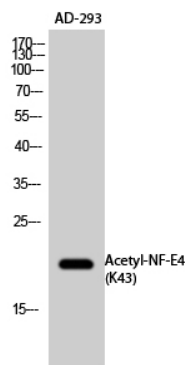
genes with enhancer elements contained in the locus control region (LCR). The complex binds to the stage selector element (SSE) in the proximal gamma-globin promoter. In contrast, isoform 2 acts as a repressor of gamma- globin gene expression by preventing NFE2 and RNA polymerase II recruitment to the promoter.

## Images

---



Western Blot analysis of AD-293 cells using Acetyl-NF-E4 (K43) Polyclonal Antibody.. Secondary antibody was diluted at 1:20000



Western Blot analysis of AD-293 cells using Acetyl-NF-E4 (K43) Polyclonal Antibody. Secondary antibody was diluted at 1:20000

Please note: All products are 'FOR RESEARCH USE ONLY. NOT FOR USE IN DIAGNOSTIC OR THERAPEUTIC PROCEDURES'.