

HSP70 (Acetyl Lys246) Polyclonal Antibody

Catalog # AP63258

Product Information

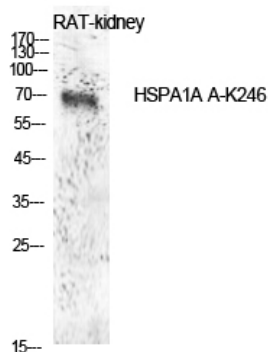
Application	WB
Primary Accession	P08107
Reactivity	Human
Host	Rabbit
Clonality	Polyclonal

Additional Information

Other Names	HSPA1A; HSPA1; HSPA1B; Heat shock 70 kDa protein 1A/1B; Heat shock 70 kDa protein 1/2; HSP70-1/HSP70-2; HSP70.1/HSP70.2
Dilution	WB~Western Blot: 1/500 - 1/2000. ELISA: 1/10000. Not yet tested in other applications.
Format	Liquid in PBS containing 50% glycerol, 0.5% BSA and 0.09% (W/V) sodium azide.
Storage Conditions	-20°C

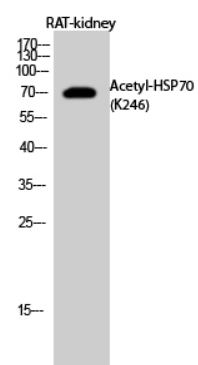
Protein Information

Images



Western Blot analysis of rat kidney cells using Acetyl-HSP70 (K246) Polyclonal Antibody. Antibody was diluted at 1:1000. Secondary antibody was diluted at 1:20000

Western Blot analysis of RAT-kidney cells using Acetyl-HSP70 (K246) Polyclonal Antibody diluted at 1 : 1000. Secondary antibody was diluted at 1:20000



Please note: All products are 'FOR RESEARCH USE ONLY. NOT FOR USE IN DIAGNOSTIC OR THERAPEUTIC PROCEDURES'.