

TAL1/2 (Acetyl Lys221/Acetyl Lys222/Acetyl Lys36/Acetyl Lys37) Polyclonal Antibody

Catalog # AP63268

Product Information

Application	WB, E
Primary Accession	P17542
Reactivity	Human, Mouse, Rat
Host	Rabbit
Clonality	Polyclonal
Calculated MW	34271

Additional Information

Gene ID	6886
Other Names	TAL1; BHLHA17; SCL; TCL5; T-cell acute lymphocytic leukemia protein 1; TAL-1; Class A basic helix-loop-helix protein 17; bHLHa17; Stem cell protein; T-cell leukemia/lymphoma protein 5; TAL2; BHLHA19; T-cell acute lymphocytic leukemia protein 2; TAL-2; Class A basic helix-loop-helix protein 19; bHLHa19
Dilution	WB~~Western Blot: 1/500 - 1/2000. ELISA: 1/10000. Not yet tested in other applications. E~~N/A
Format	Liquid in PBS containing 50% glycerol, 0.5% BSA and 0.09% (W/V) sodium azide.
Storage Conditions	-20°C

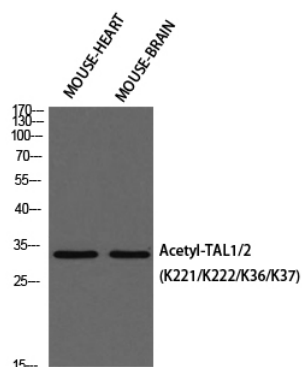
Protein Information

Name	TAL1
Synonyms	BHLHA17, SCL, TCL5
Function	Implicated in the genesis of hemopoietic malignancies. It may play an important role in hemopoietic differentiation. Serves as a positive regulator of erythroid differentiation (By similarity).
Cellular Location	Nucleus {ECO:0000255 PROSITE-ProRule:PRU00981}.
Tissue Location	Leukemic stem cell.

Background

Implicated in the genesis of hemopoietic malignancies. It may play an important role in hemopoietic differentiation. Serves as a positive regulator of erythroid differentiation (By similarity).

Images



Western blot analysis of MOUSE-HEART MOUSE-BRAIN using Acetyl-TAL1/2 (K221/K222/K36/K37) antibody. Antibody was diluted at 1:500. Secondary antibody was diluted at 1:20000

Please note: All products are 'FOR RESEARCH USE ONLY. NOT FOR USE IN DIAGNOSTIC OR THERAPEUTIC PROCEDURES'.