

Histone H2B (Acetyl Lys21) Polyclonal Antibody

Catalog # AP63276

Product Information

| | |
|-------------------|--|
| Application | WB |
| Primary Accession | Q96A08 , P33778 , P62807 |
| Reactivity | Human, Rat, Mouse |
| Host | Rabbit |
| Clonality | Polyclonal |
| Calculated MW | 14167 |

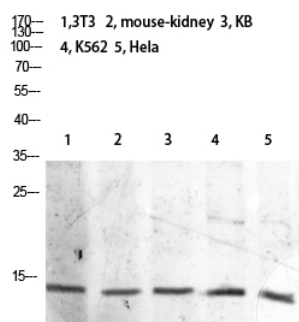
Additional Information

| | |
|--------------------|---|
| Gene ID | 255626 |
| Dilution | WB~~WB 1:500-2000, ELISA 1:10000-20000 |
| Format | Liquid in PBS containing 50% glycerol, 0.5% BSA and 0.09% (W/V) sodium azide. |
| Storage Conditions | -20°C |

Protein Information

| | |
|-------------------|--|
| Name | H2BC1 (HGNC:18730) |
| Function | Variant histone specifically required to direct the transformation of dissociating nucleosomes to protamine in male germ cells (By similarity). Entirely replaces classical histone H2B prior nucleosome to protamine transition and probably acts as a nucleosome dissociating factor that creates a more dynamic chromatin, facilitating the large-scale exchange of histones (By similarity). Core component of nucleosome (By similarity). Nucleosomes wrap and compact DNA into chromatin, limiting DNA accessibility to the cellular machineries which require DNA as a template (By similarity). Histones thereby play a central role in transcription regulation, DNA repair, DNA replication and chromosomal stability (By similarity). DNA accessibility is regulated via a complex set of post-translational modifications of histones, also called histone code, and nucleosome remodeling (By similarity). Also found in fat cells, its function and the presence of post-translational modifications specific to such cells are still unclear (PubMed: 21249133). |
| Cellular Location | Nucleus {ECO:0000250 UniProtKB:P70696}. Chromosome {ECO:0000250 UniProtKB:P70696} |
| Tissue Location | Mainly expressed in testis, and the corresponding protein is also present in mature sperm (at protein level). Also found in some fat cells. |

Images



Western blot analysis of 3T3 mouse-kidney KB K562 HeLa lysate, antibody was diluted at 2000. Secondary antibody was diluted at 1:20000

Please note: All products are 'FOR RESEARCH USE ONLY. NOT FOR USE IN DIAGNOSTIC OR THERAPEUTIC PROCEDURES'.