

CK7 Monoclonal Antibody(12D7)

Catalog # AP63308

Product Information

Application	WB, IHC-P, IF, IP
Primary Accession	P08729
Reactivity	Human, Mouse, Rat
Host	Mouse
Clonality	Monoclonal
Calculated MW	51386

Additional Information

Gene ID	3855
Other Names	KRT7; SCL; Keratin, type II cytoskeletal 7; Cytokeratin-7; CK-7; Keratin-7; K7; Sarcolectin; Type-II keratin Kb7
Dilution	WB~~IF: 1:50-200 WB: 1:1000-2000 IHC: 1:200 IP:1:200 IHC-P~~IF: 1:50-200 WB: 1:1000-2000 IHC: 1:200 IP:1:200 IF~~IF: 1:50-200 WB: 1:1000-2000 IHC: 1:200 IP:1:200 IP~~N/A
Format	PBS, pH 7.4, containing 0.09% (W/V) sodium azide as Preservative and 50% Glycerol.
Storage Conditions	-20°C

Protein Information

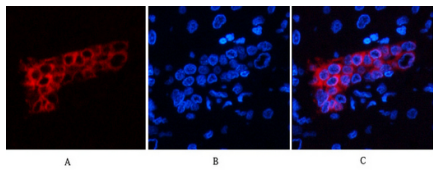
Name	KRT7
Synonyms	SCL
Function	Blocks interferon-dependent interphase and stimulates DNA synthesis in cells. Involved in the translational regulation of the human papillomavirus type 16 E7 mRNA (HPV16 E7).
Cellular Location	Cytoplasm.
Tissue Location	Expressed in cultured epidermal, bronchial and mesothelial cells but absent in colon, ectocervix and liver. Observed throughout the glandular cells in the junction between stomach and esophagus but is absent in the esophagus.

Background

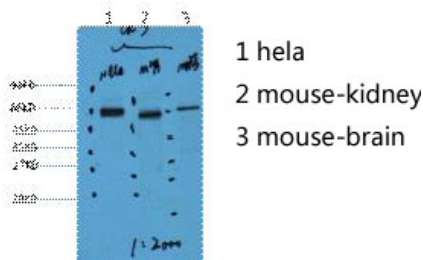
Blocks interferon-dependent interphase and stimulates DNA synthesis in cells. Involved in the translational

regulation of the human papillomavirus type 16 E7 mRNA (HPV16 E7).

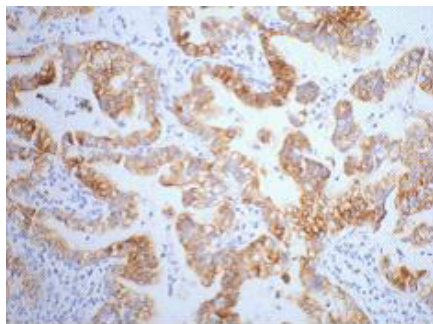
Images



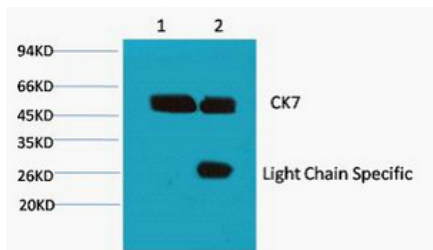
Immunofluorescence analysis of human-liver tissue. 1,CK7 Monoclonal Antibody(12D7)(red) was diluted at 1:200(4°C,overnight). 2, Cy3 labeled Secondary antibody was diluted at 1:300(room temperature, 50min).3, Picture B: DAPI(blue) 10min. Picture A:Target. Picture C: merge of A+B



Western blot analysis of 1) Hela, 2) Mouse Kidney, 3) Mouse Brain, diluted at 1:2000.



IHC staining of human lung cancer tissue, diluted at 1:200.



1) Input: Hela Cell Lysate 2) IP product: IP dilute 1:200

Please note: All products are 'FOR RESEARCH USE ONLY. NOT FOR USE IN DIAGNOSTIC OR THERAPEUTIC PROCEDURES'.