

# Myosin Heavy Chain Monoclonal Antibody(11C2)

Catalog # AP63312

## Product Information

---

<b>Application</b>	IF
<b>Reactivity</b>	Human, Mouse, Rat, Drosophila, Nematode
<b>Host</b>	Mouse
<b>Clonality</b>	Monoclonal

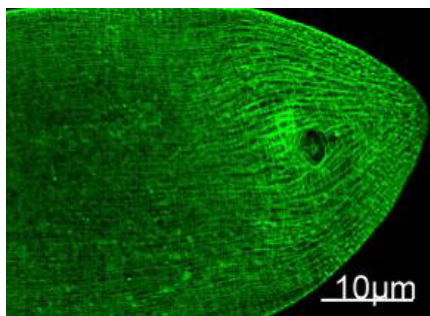
## Additional Information

---

<b>Dilution</b>	IF~~IF: 1:100
<b>Format</b>	PBS, pH 7.4, containing 0.09% (W/V) sodium azide as Preservative and 50% Glycerol.
<b>Storage Conditions</b>	-20°C

## Images

---



Immunofluorescence Staining of nematode tissue with MYH mouse mAb (11C2) diluted at 1:100. (Provide by Tsinghua University) .

Please note: All products are 'FOR RESEARCH USE ONLY. NOT FOR USE IN DIAGNOSTIC OR THERAPEUTIC PROCEDURES'.