

FH Monoclonal Antibody(7F1)

Catalog # AP63327

Product Information

Application	WB, IHC-P, IF
Primary Accession	P07954
Reactivity	Human, Mouse, Rat
Host	Mouse
Clonality	Monoclonal
Calculated MW	54637

Additional Information

Gene ID	2271
Other Names	Fumarate hydratase, mitochondrial (Fumarase) (EC 4.2.1.2)
Dilution	WB~~WB: 1:3000 IF 1:200 IHC 1:50-300 IHC-P~~N/A IF~~1:50~200
Format	PBS, pH 7.4, containing 0.09% (W/V) sodium azide as Preservative and 50% Glycerol.
Storage Conditions	-20°C

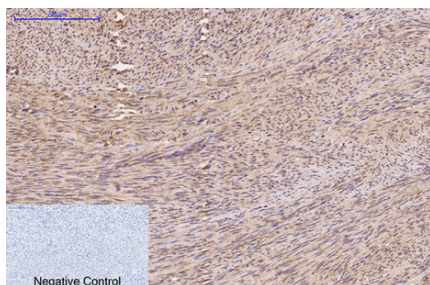
Protein Information

Name	FH {ECO:0000303 PubMed:27037871, ECO:0000312 HGNC:HGNC:3700}
Function	Catalyzes the reversible stereospecific interconversion of fumarate to L-malate (PubMed: 30761759). Experiments in other species have demonstrated that specific isoforms of this protein act in defined pathways and favor one direction over the other (Probable).
Cellular Location	[Isoform Mitochondrial]: Mitochondrion
Tissue Location	Expressed in red blood cells; underexpressed in red blood cells (cytoplasm) of patients with hereditary non-spherocytic hemolytic anemia of unknown etiology.

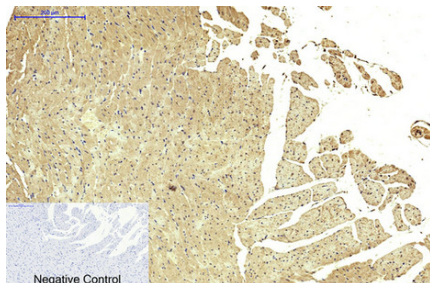
Background

Also acts as a tumor suppressor.

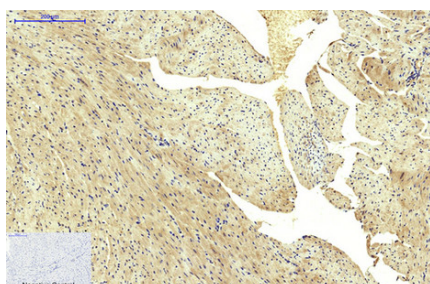
Images



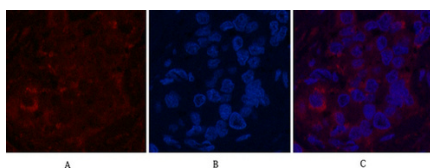
Immunohistochemical analysis of paraffin-embedded Human-uterus tissue. 1,FH Monoclonal Antibody(7F1) was diluted at 1:200(4°C,overnight). 2, Sodium citrate pH 6.0 was used for antibody retrieval(>98°C,20min). 3,Secondary antibody was diluted at 1:200(room temperature, 30min). Negative control was used by secondary antibody only.



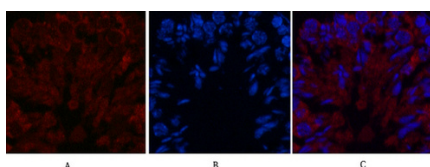
Immunohistochemical analysis of paraffin-embedded Rat-heart tissue. 1,FH Monoclonal Antibody(7F1) was diluted at 1:200(4°C,overnight). 2, Sodium citrate pH 6.0 was used for antibody retrieval(>98°C,20min). 3,Secondary antibody was diluted at 1:200(room temperature, 30min). Negative control was used by secondary antibody only.



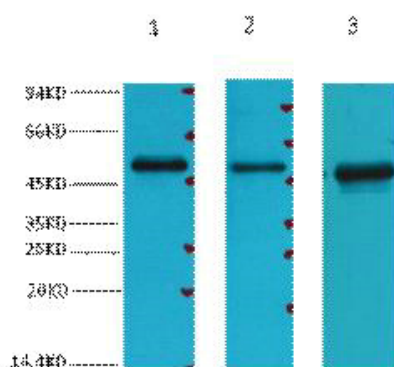
Immunohistochemical analysis of paraffin-embedded Mouse-heart tissue. 1,FH Monoclonal Antibody(7F1) was diluted at 1:200(4°C,overnight). 2, Sodium citrate pH 6.0 was used for antibody retrieval(>98°C,20min). 3,Secondary antibody was diluted at 1:200(room temperature, 30min). Negative control was used by secondary antibody only.



Immunofluorescence analysis of Human-liver-cancer tissue. 1,FH Monoclonal Antibody(7F1)(red) was diluted at 1:200(4°C,overnight). 2, Cy3 labeled Secondary antibody was diluted at 1:300(room temperature, 50min).3, Picture B: DAPI(blue) 10min. Picture A:Target. Picture B: DAPI. Picture C: merge of A+B



Immunofluorescence analysis of Mouse-testis tissue. 1,FH Monoclonal Antibody(7F1)(red) was diluted at 1:200(4°C,overnight). 2, Cy3 labeled Secondary antibody was diluted at 1:300(room temperature, 50min).3, Picture B: DAPI(blue) 10min. Picture A:Target. Picture B: DAPI. Picture C: merge of A+B



Western blot analysis of 1) 293T, 2) HepG2, 3) HeLa, diluted at 1:3000.