

AFP alpha 1 Fetoprotein Monoclonal Antibody(17C5)

Catalog # AP63329

Product Information

Application	WB, IHC-P, IF
Primary Accession	P02771
Reactivity	Human
Host	Mouse
Clonality	Monoclonal
Calculated MW	68678

Additional Information

Gene ID	174
Other Names	AFP; HPAFP; Alpha-fetoprotein; Alpha-1-fetoprotein; Alpha-fetoglobulin
Dilution	WB~~WB: 1:2000 IF 1:200 IHC 1:50-300 IHC-P~~N/A IF~~1:50~200
Format	PBS, pH 7.4, containing 0.09% (W/V) sodium azide as Preservative and 50% Glycerol.
Storage Conditions	-20°C

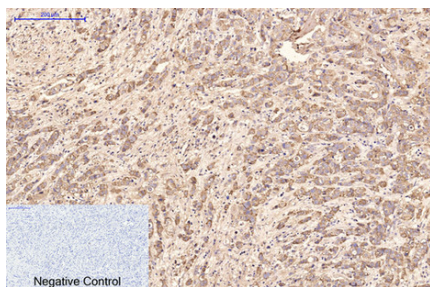
Protein Information

Name	AFP
Synonyms	HPAFP
Function	Binds copper, nickel, and fatty acids as well as, and bilirubin less well than, serum albumin. Only a small percentage (less than 2%) of the human AFP shows estrogen-binding properties.
Cellular Location	Secreted.
Tissue Location	Plasma. Synthesized by the fetal liver and yolk sac

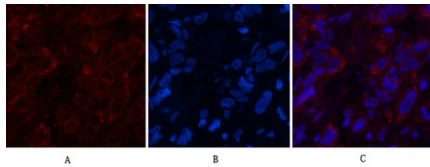
Background

Binds copper, nickel, and fatty acids as well as, and bilirubin less well than, serum albumin. Only a small percentage (less than 2%) of the human AFP shows estrogen-binding properties.

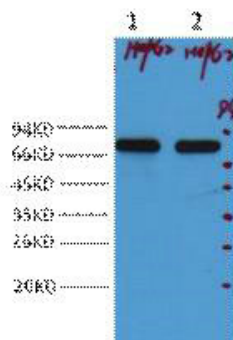
Images



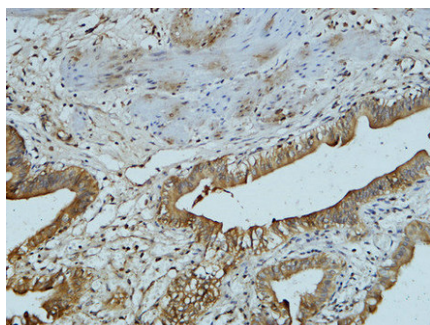
Immunohistochemical analysis of paraffin-embedded Human-breast-cancer tissue. 1,AFP alpha 1 Fetoprotein Monoclonal Antibody(17C5) was diluted at 1:200(4°C,overnight). 2, Sodium citrate pH 6.0 was used for antibody retrieval(>98°C,20min). 3,Secondary antibody was diluted at 1:200(room tempeRature, 30min). Negative control was used by secondary antibody only.



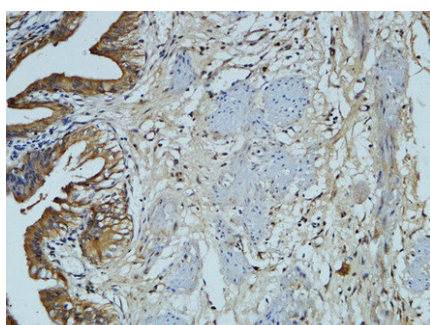
Immunofluorescence analysis of Human-breast-cancer tissue. 1,AFP alpha 1 Fetoprotein Monoclonal Antibody(17C5)(red) was diluted at 1:200(4°C,overnight). 2, Cy3 labeled Secondary antibody was diluted at 1:300(room temperature, 50min).3, Picture B: DAPI(blue) 10min. Picture A:Target. Picture B: DAPI. Picture C: merge of A+B



Western blot analysis of HepG2, diluted at 1:2,000.

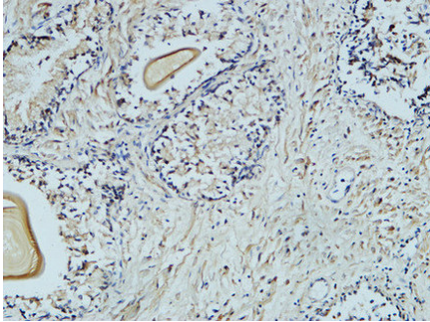
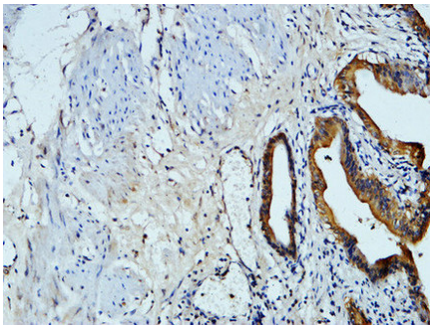


Immunohistochemical analysis of paraffin-embedded Human gallbladder. 1, Antibody was diluted at 1:100(4°,overnight). 2, High-pressure and temperature EDTA, pH8.0 was used for antigen retrieval. 3,Secondary antibody was diluted at 1:200(room temperature, 30min).

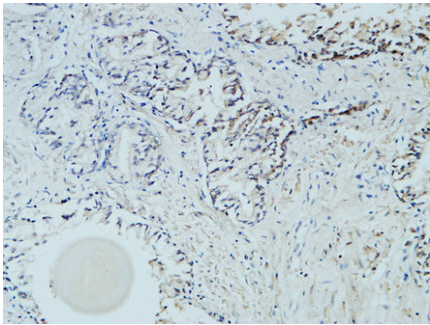


Immunohistochemical analysis of paraffin-embedded Human gallbladder. 1, Antibody was diluted at 1:100(4°,overnight). 2, High-pressure and temperature EDTA, pH8.0 was used for antigen retrieval. 3,Secondary antibody was diluted at 1:200(room temperature, 30min).

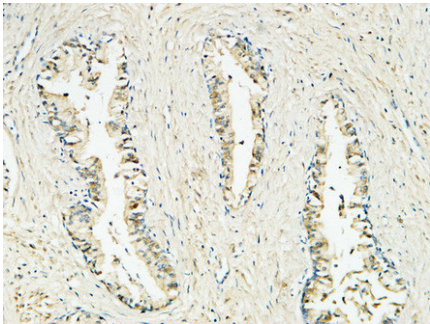
Immunohistochemical analysis of paraffin-embedded Human gallbladder. 1, Antibody was diluted at 1:100(4°,overnight). 2, High-pressure and temperature EDTA, pH8.0 was used for antigen retrieval. 3,Secondary antibody was diluted at 1:200(room temperature, 30min).



Immunohistochemical analysis of paraffin-embedded Human Prostate. 1, Antibody was diluted at 1:100(4°,overnight). 2, High-pressure and temperature EDTA, pH8.0 was used for antigen retrieval. 3,Secondary antibody was diluted at 1:200(room temperature, 30min).



Immunohistochemical analysis of paraffin-embedded Human Prostate. 1, Antibody was diluted at 1:100(4°,overnight). 2, High-pressure and temperature EDTA, pH8.0 was used for antigen retrieval. 3,Secondary antibody was diluted at 1:200(room temperature, 30min).



Immunohistochemical analysis of paraffin-embedded Human Prostate. 1, Antibody was diluted at 1:100(4°,overnight). 2, High-pressure and temperature EDTA, pH8.0 was used for antigen retrieval. 3,Secondary antibody was diluted at 1:200(room temperature, 30min).

Please note: All products are 'FOR RESEARCH USE ONLY. NOT FOR USE IN DIAGNOSTIC OR THERAPEUTIC PROCEDURES'.