

# ERCC1 Monoclonal Antibody(1B10)

Catalog # AP63332

## Product Information

---

<b>Application</b>	WB, IHC-P
<b>Primary Accession</b>	<a href="#">P07992</a>
<b>Reactivity</b>	Human
<b>Host</b>	Mouse
<b>Clonality</b>	Monoclonal
<b>Calculated MW</b>	32562

## Additional Information

---

<b>Gene ID</b>	2067
<b>Other Names</b>	ERCC1; DNA excision repair protein ERCC-1
<b>Dilution</b>	WB~~1:1000 IHC-P~~N/A
<b>Format</b>	PBS, pH 7.4, containing 0.09% (W/V) sodium azide as Preservative and 50% Glycerol.
<b>Storage Conditions</b>	-20°C

## Protein Information

---

<b>Name</b>	ERCC1
<b>Function</b>	[Isoform 1]: Non-catalytic component of a structure-specific DNA repair endonuclease responsible for the 5'-incision during DNA repair. Responsible, in conjunction with SLX4, for the first step in the repair of interstrand cross-links (ICL). Participates in the processing of anaphase bridge-generating DNA structures, which consist in incompletely processed DNA lesions arising during S or G2 phase, and can result in cytokinesis failure. Also required for homology-directed repair (HDR) of DNA double-strand breaks, in conjunction with SLX4.
<b>Cellular Location</b>	[Isoform 1]: Nucleus [Isoform 3]: Nucleus

## Background

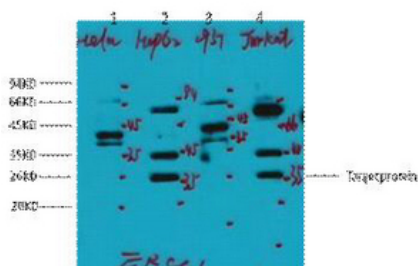
---

Isoform 1: Non-catalytic component of a structure-specific DNA repair endonuclease responsible for the 5'-incision during DNA repair. Responsible, in conjunction with SLX4, for the first step in the repair of interstrand cross-links (ICL). Participates in the processing of anaphase bridge-generating DNA structures, which consist in incompletely processed DNA lesions arising during S or G2 phase, and can result in

cytokinesis failure. Also required for homology-directed repair (HDR) of DNA double-strand breaks, in conjunction with SLX4.

## Images

---



Western blot analysis of 1) HeLa, 2) HepG2, 3) 293T, 4) Jurkat, diluted at 1:2000. cells nucleus extracted by Minute TM Cytoplasmic and Nuclear Fractionation kit (SC-003, Invent biotech, MN, USA).

Please note: All products are 'FOR RESEARCH USE ONLY. NOT FOR USE IN DIAGNOSTIC OR THERAPEUTIC PROCEDURES'.