

# Cytokeratin 6 Monoclonal Antibody(4A1)

Catalog # AP63334

## Product Information

---

Application	WB, IHC-P, IF
Primary Accession	<a href="#">P02538</a> , <a href="#">P04259</a> , <a href="#">P48668</a>
Reactivity	Human
Host	Mouse
Clonality	Monoclonal
Calculated MW	60045

## Additional Information

---

Gene ID	3853
Dilution	WB~~WB: 1:1000 IF 1:200 IHC 1:50-300 IHC-P~~N/A IF~~1:50~200
Format	PBS, pH 7.4, containing 0.09% (W/V) sodium azide as Preservative and 50% Glycerol.
Storage Conditions	-20°C

## Protein Information

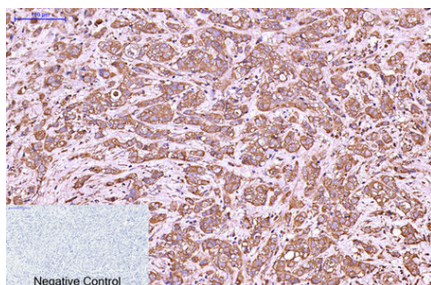
---

Name	KRT6A
Synonyms	K6A, KRT6D
Function	Epidermis-specific type I keratin involved in wound healing. Involved in the activation of follicular keratinocytes after wounding, while it does not play a major role in keratinocyte proliferation or migration. Participates in the regulation of epithelial migration by inhibiting the activity of SRC during wound repair.
Tissue Location	Expressed in the corneal epithelium (at protein level).

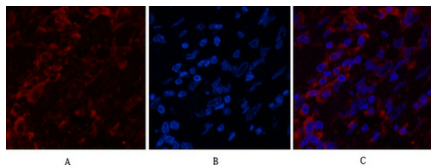
## Images

---

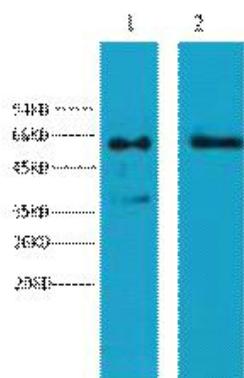
Immunohistochemical analysis of paraffin-embedded Human-breast-cancer tissue. 1,CytokeRatin 6 Monoclonal Antibody(4A1) was diluted at 1:200(4°C,overnight). 2, Sodium citrate pH 6.0 was used for antibody retrieval(>98°C,20min). 3,Secondary antibody was diluted at 1:200(room tempeRature, 30min). Negative control



was used by secondary antibody only.



Immunofluorescence analysis of Human-breast-cancer tissue. 1, Cytokeratin 6 Monoclonal Antibody(4A1)(red) was diluted at 1:200(4°C, overnight). 2, Cy3 labeled Secondary antibody was diluted at 1:300(room temperature, 50min). 3, Picture B: DAPI(blue) 10min. Picture A: Target. Picture B: DAPI. Picture C: merge of A+B



Western blot analysis of 1) Hela, 2) HepG2, diluted at 1:2000.

Please note: All products are 'FOR RESEARCH USE ONLY. NOT FOR USE IN DIAGNOSTIC OR THERAPEUTIC PROCEDURES'.