

# EFHD1 Monoclonal Antibody(3G2)

Catalog # AP63339

## Product Information

---

<b>Application</b>	WB, IHC-P, IF
<b>Primary Accession</b>	<a href="#">Q9BUP0</a>
<b>Reactivity</b>	Human, Mouse, Rat
<b>Host</b>	Mouse
<b>Clonality</b>	Monoclonal
<b>Calculated MW</b>	26928

## Additional Information

---

<b>Gene ID</b>	80303
<b>Other Names</b>	EF-hand domain-containing protein D1 (EF-hand domain-containing protein 1) (Swiprosin-2)
<b>Dilution</b>	WB~~WB: 1:2000 IF: 1:100-200 IHC 1:50-300 IHC-P~~WB: 1:2000 IF: 1:100-200 IHC 1:50-300 IF~~WB: 1:2000 IF: 1:100-200 IHC 1:50-300
<b>Format</b>	PBS, pH 7.4, containing 0.09% (W/V) sodium azide as Preservative and 50% Glycerol.
<b>Storage Conditions</b>	-20°C

## Protein Information

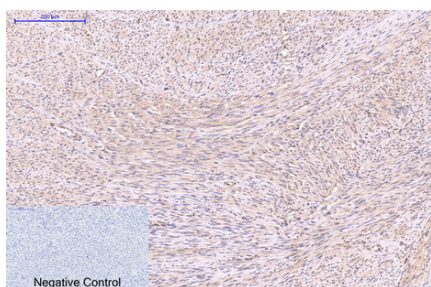
---

<b>Name</b>	EFHD1
<b>Synonyms</b>	SWS2
<b>Function</b>	Acts as a calcium sensor for mitochondrial flash (mitoflash) activation, an event characterized by stochastic bursts of superoxide production (PubMed: <a href="#">26975899</a> ). May play a role in neuronal differentiation (By similarity).
<b>Cellular Location</b>	Mitochondrion inner membrane {ECO:0000250 UniProtKB:Q9D4J1}

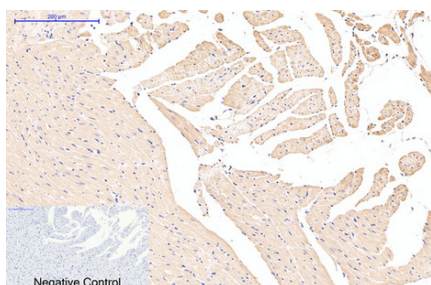
## Background

---

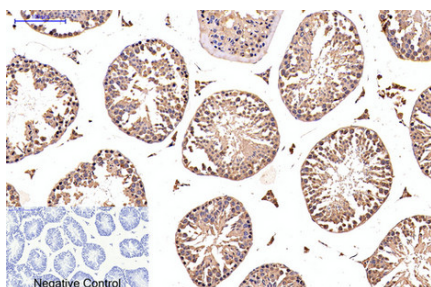
Acts as a calcium sensor for mitochondrial flash (mitoflash) activation, an event characterized by stochastic bursts of superoxide production (PubMed:[26975899](#)). May play a role in neuronal differentiation (By similarity).



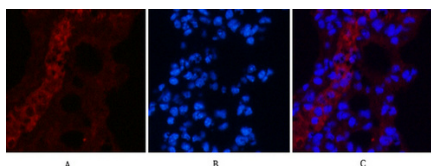
Immunohistochemical analysis of paraffin-embedded Human-uterus tissue. 1,EFHD1 Monoclonal Antibody(3G2) was diluted at 1:200(4°C,overnight). 2, Sodium citrate pH 6.0 was used for antibody retrieval(>98°C,20min). 3,Secondary antibody was diluted at 1:200(room temperature, 30min). Negative control was used by secondary antibody only.



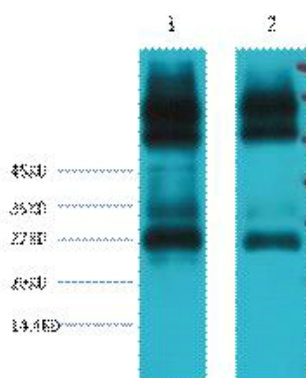
Immunohistochemical analysis of paraffin-embedded Rat-heart tissue. 1,EFHD1 Monoclonal Antibody(3G2) was diluted at 1:200(4°C,overnight). 2, Sodium citrate pH 6.0 was used for antibody retrieval(>98°C,20min). 3,Secondary antibody was diluted at 1:200(room temperature, 30min). Negative control was used by secondary antibody only.



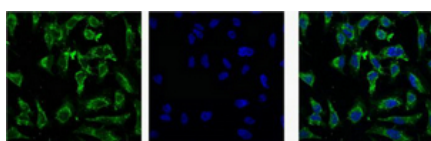
Immunohistochemical analysis of paraffin-embedded Mouse-testis tissue. 1,EFHD1 Monoclonal Antibody(3G2) was diluted at 1:200(4°C,overnight). 2, Sodium citrate pH 6.0 was used for antibody retrieval(>98°C,20min). 3,Secondary antibody was diluted at 1:200(room temperature, 30min). Negative control was used by secondary antibody only.



Immunofluorescence analysis of Mouse-lung tissue. 1,EFHD1 Monoclonal Antibody(3G2)(red) was diluted at 1:200(4°C,overnight). 2, Cy3 labeled Secondary antibody was diluted at 1:300(room temperature, 50min).3, Picture B: DAPI(blue) 10min. Picture A:Target. Picture B: DAPI. Picture C: merge of A+B



Western blot analysis of 1) Mouse spleen tissue, 2) Rat spleen tissue, diluted at 1:3000.



IF analysis of Hela with antibody (Left) and DAPI (Right) diluted at 1:100.