

CD41 Monoclonal Antibody(Q90)

Catalog # AP63360

Product Information

Application	IHC-P
Primary Accession	P08514
Reactivity	Human
Host	Mouse
Clonality	Monoclonal
Calculated MW	113377

Additional Information

Gene ID	3674
Other Names	ITGA2B; GP2B; ITGAB; Integrin alpha-IIb; GPalpha IIb; GPIIb; Platelet membrane glycoprotein IIb; CD41
Dilution	IHC-P~~IHC: 1:100
Format	PBS, pH 7.4, containing 0.09% (W/V) sodium azide as Preservative and 50% Glycerol.
Storage Conditions	-20°C

Protein Information

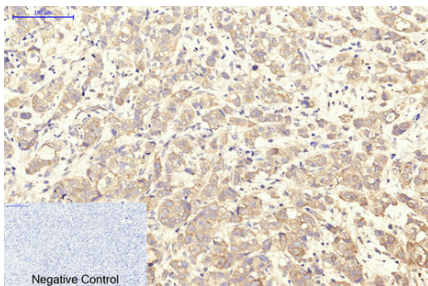
Name	ITGA2B
Synonyms	GP2B, ITGAB
Function	<p>Integrin alpha-IIb/beta-3 is a receptor for fibronectin, fibrinogen, plasminogen, prothrombin, thrombospondin and vitronectin. It recognizes the sequence R-G-D in a wide array of ligands. It recognizes the sequence H-H-L-G-G-A-K-Q-A-G-D-V in fibrinogen gamma chain (By similarity). Following activation integrin alpha-IIb/beta-3 brings about platelet/platelet interaction through binding of soluble fibrinogen (PubMed:9111081). This step leads to rapid platelet aggregation which physically plugs ruptured endothelial cell surface (By similarity).</p>
Cellular Location	Membrane; Single-pass type I membrane protein.
Tissue Location	<p>Isoform 1 and isoform 2 are expressed in platelets and megakaryocytes, but not in reticulocytes. Not detected in Jurkat, nor in U937 cell lines (PubMed:2351656). Isoform 3 is expressed in prostate adenocarcinoma, as well as in several erythroleukemia, prostate adenocarcinoma and melanoma cell lines, including PC-3, DU-145, HEL, WM983A, WM983B and WM35. Not</p>

detected in platelets, nor in normal prostate (at protein level)
(PubMed:9809974)

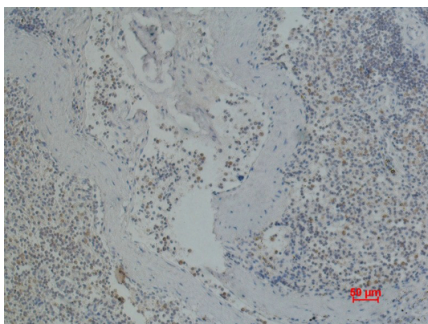
Background

Integrin alpha-IIb/beta-3 is a receptor for fibronectin, fibrinogen, plasminogen, prothrombin, thrombospondin and vitronectin. It recognizes the sequence R-G-D in a wide array of ligands. It recognizes the sequence H-H-L-G-G-G-A-K-Q-A-G-D-V in fibrinogen gamma chain. Following activation integrin alpha-IIb/beta-3 brings about platelet/platelet interaction through binding of soluble fibrinogen. This step leads to rapid platelet aggregation which physically plugs ruptured endothelial cell surface.

Images



Immunohistochemical analysis of paraffin-embedded Human-breast-cancer tissue. 1,CD41 Monoclonal Antibody(Q90) was diluted at 1:200(4°C,overnight). 2, Sodium citrate pH 6.0 was used for antibody retrieval(>98°C,20min). 3,Secondary antibody was diluted at 1:200(room tempeRature, 30min). Negative control was used by secondary antibody only.



Immunohistochemical analysis of paraffin-embedded Human Spleen using CD41 Mouse mAb diluted at 1:200.

Please note: All products are 'FOR RESEARCH USE ONLY. NOT FOR USE IN DIAGNOSTIC OR THERAPEUTIC PROCEDURES'.