

# CD25 Monoclonal Antibody(Q22)

Catalog # AP63361

## Product Information

---

<b>Application</b>	IHC-P
<b>Primary Accession</b>	<a href="#">P01589</a>
<b>Reactivity</b>	Human
<b>Host</b>	Mouse
<b>Clonality</b>	Monoclonal
<b>Calculated MW</b>	30819

## Additional Information

---

<b>Gene ID</b>	3559
<b>Other Names</b>	IL2RA; Interleukin-2 receptor subunit alpha; IL-2 receptor subunit alpha; IL-2-RA; IL-2R subunit alpha; IL2-RA; TAC antigen; p55; CD25
<b>Dilution</b>	IHC-P~~N/A
<b>Format</b>	PBS, pH 7.4, containing 0.09% (W/V) sodium azide as Preservative and 50% Glycerol.
<b>Storage Conditions</b>	-20°C

## Protein Information

---

<b>Name</b>	IL2RA
<b>Function</b>	Receptor for interleukin-2. The receptor is involved in the regulation of immune tolerance by controlling regulatory T cells (TREGs) activity. TREGs suppress the activation and expansion of autoreactive T-cells.
<b>Cellular Location</b>	Membrane; Single-pass type I membrane protein.

## Background

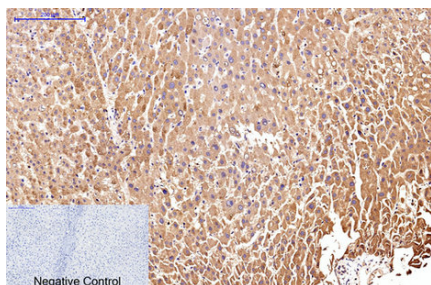
---

Receptor for interleukin-2. The receptor is involved in the regulation of immune tolerance by controlling regulatory T cells (TREGs) activity. TREGs suppress the activation and expansion of autoreactive T-cells.

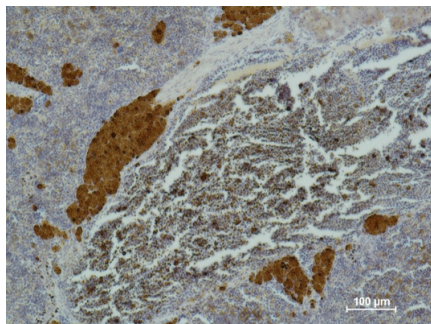
## Images

---

Immunohistochemical analysis of paraffin-embedded Human-liver tissue. 1,CD25 Monoclonal Antibody(Q22)



was diluted at 1:200(4°C,overnight). 2, Sodium citrate pH 6.0 was used for antibody retrieval(>98°C,20min). 3,Secondary antibody was diluted at 1:200(room temperature, 30min). Negative control was used by secondary antibody only.



Immunohistochemical analysis of paraffin-embedded Mouse SpleenTissue using CD 25 Mouse mAb diluted at 1:500.

Please note: All products are 'FOR RESEARCH USE ONLY. NOT FOR USE IN DIAGNOSTIC OR THERAPEUTIC PROCEDURES'.