

# Collagen III Monoclonal Antibody(Q76)

Catalog # AP63370

## Product Information

---

<b>Application</b>	WB, IHC-P, IF
<b>Primary Accession</b>	<a href="#">P02461</a>
<b>Reactivity</b>	Human, Mouse, Rat
<b>Host</b>	Mouse
<b>Clonality</b>	Monoclonal
<b>Calculated MW</b>	138564

## Additional Information

---

<b>Gene ID</b>	1281
<b>Other Names</b>	COL3A1; Collagen alpha-1(III) chain
<b>Dilution</b>	WB~~WB: 1:1000 IF 1:200 IHC 1:50-300 IHC-P~~N/A IF~~1:50~200
<b>Format</b>	PBS, pH 7.4, containing 0.09% (W/V) sodium azide as Preservative and 50% Glycerol.
<b>Storage Conditions</b>	-20°C

## Protein Information

---

<b>Name</b>	COL3A1
<b>Function</b>	Collagen type III occurs in most soft connective tissues along with type I collagen. Involved in regulation of cortical development. Is the major ligand of ADGRG1 in the developing brain and binding to ADGRG1 inhibits neuronal migration and activates the RhoA pathway by coupling ADGRG1 to GNA13 and possibly GNA12.
<b>Cellular Location</b>	Secreted, extracellular space, extracellular matrix {ECO:0000255   PROSITE-ProRule:PRU00793}

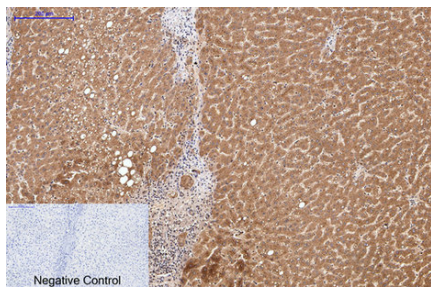
## Background

---

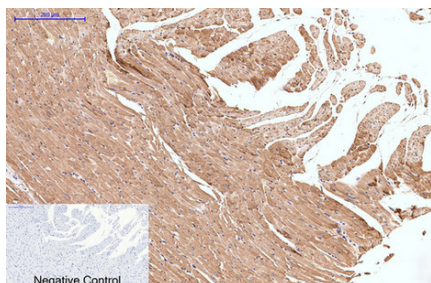
Collagen type III occurs in most soft connective tissues along with type I collagen. Involved in regulation of cortical development. Is the major ligand of ADGRG1 in the developing brain and binding to ADGRG1 inhibits neuronal migration and activates the RhoA pathway by coupling ADGRG1 to GNA13 and possibly GNA12.

## Images

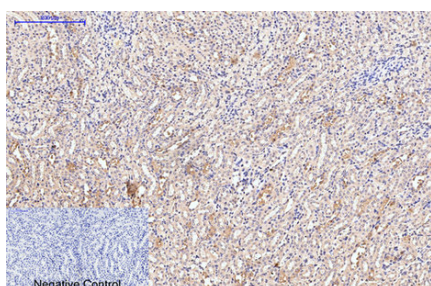
---



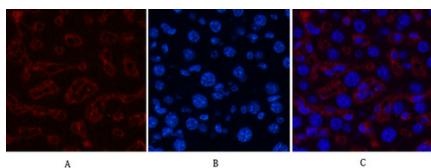
Immunohistochemical analysis of paraffin-embedded Human-liver tissue. 1, Collagen III Monoclonal Antibody(Q76) was diluted at 1:200(4°C, overnight). 2, Sodium citrate pH 6.0 was used for antibody retrieval(>98°C, 20min). 3, Secondary antibody was diluted at 1:200(room temperature, 30min). Negative control was used by secondary antibody only.



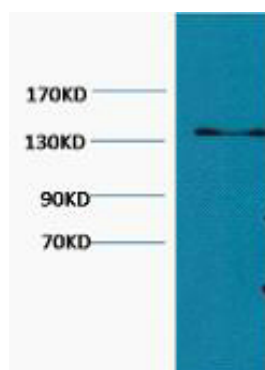
Immunohistochemical analysis of paraffin-embedded Rat-heart tissue. 1, Collagen III Monoclonal Antibody(Q76) was diluted at 1:200(4°C, overnight). 2, Sodium citrate pH 6.0 was used for antibody retrieval(>98°C, 20min). 3, Secondary antibody was diluted at 1:200(room temperature, 30min). Negative control was used by secondary antibody only.



Immunohistochemical analysis of paraffin-embedded Mouse-kidney tissue. 1, Collagen III Monoclonal Antibody(Q76) was diluted at 1:200(4°C, overnight). 2, Sodium citrate pH 6.0 was used for antibody retrieval(>98°C, 20min). 3, Secondary antibody was diluted at 1:200(room temperature, 30min). Negative control was used by secondary antibody only.



Immunofluorescence analysis of Mouse-liver tissue. 1, Collagen III Monoclonal Antibody(Q76)(red) was diluted at 1:200(4°C, overnight). 2, Cy3 labeled Secondary antibody was diluted at 1:300(room temperature, 50min). 3, Picture B: DAPI(blue) 10min. Picture A: Target. Picture B: DAPI. Picture C: merge of A+B



Western blot analysis of Hela, diluted at 1:1000.

Please note: All products are 'FOR RESEARCH USE ONLY. NOT FOR USE IN DIAGNOSTIC OR THERAPEUTIC PROCEDURES'.