

Rabbit IgG (Fc specific, Heavy Chain) Monoclonal Antibody(1E1)

Catalog # AP63387

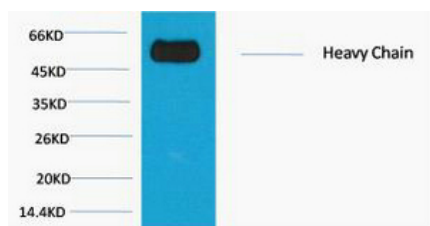
Product Information

| | |
|--------------------|------------|
| Application | WB |
| Reactivity | Rabbit |
| Host | Mouse |
| Clonality | Monoclonal |

Additional Information

| | |
|---------------------------|--|
| Dilution | WB~~WB: 1:2000-5000 |
| Format | PBS, pH 7.4, containing 0.09% (W/V) sodium azide as Preservative and 50% Glycerol. |
| Storage Conditions | -20°C |

Images



Western blot analysis of Reduced Rabbit IgG, H+L, diluted at 1:10000.

Please note: All products are 'FOR RESEARCH USE ONLY. NOT FOR USE IN DIAGNOSTIC OR THERAPEUTIC PROCEDURES'.