

MeCP2 Polyclonal Antibody

Catalog # AP63389

Product Information

Application	WB
Primary Accession	P51608
Reactivity	Human
Host	Rabbit
Clonality	Polyclonal
Calculated MW	52441

Additional Information

Gene ID	4204
Other Names	Methyl-CpG-binding protein 2 (MeCp-2 protein) (MeCp2)
Dilution	WB~~WB: 1:2000
Format	PBS, pH 7.4, containing 0.09% (W/V) sodium azide as Preservative and 50% Glycerol.
Storage Conditions	-20°C

Protein Information

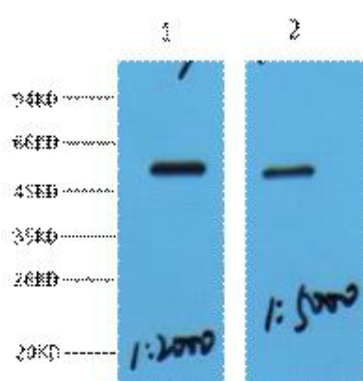
Name	MECP2
Function	Chromosomal protein that binds to methylated DNA. It can bind specifically to a single methyl-CpG pair. It is not influenced by sequences flanking the methyl-CpGs. Mediates transcriptional repression through interaction with histone deacetylase and the corepressor SIN3A. Binds both 5-methylcytosine (5mC) and 5-hydroxymethylcytosine (5hmC)- containing DNA, with a preference for 5-methylcytosine (5mC).
Cellular Location	Nucleus {ECO:0000250 UniProtKB:Q9Z2D6}. Note=Colocalized with methyl-CpG in the genome. Colocalized with TBL1X to the heterochromatin foci.
Tissue Location	Present in all adult somatic tissues tested.

Background

Chromosomal protein that binds to methylated DNA. It can bind specifically to a single methyl-CpG pair. It is not influenced by sequences flanking the methyl-CpGs. Mediates transcriptional repression through interaction with histone deacetylase and the corepressor SIN3A. Binds both 5-methylcytosine (5mC) and

5-hydroxymethylcytosine (5hmC)-containing DNA, with a preference for 5-methylcytosine (5mC).

Images



Western blot analysis of Hela, diluted at 1) 1:2000 2) 1:5000. Secondary antibody was diluted at 1:20000

Please note: All products are 'FOR RESEARCH USE ONLY. NOT FOR USE IN DIAGNOSTIC OR THERAPEUTIC PROCEDURES'.