

# Bovine Serum Albumin Polyclonal Antibody

Catalog # AP63400

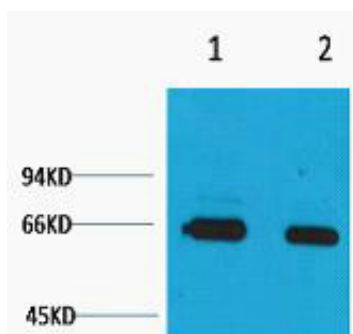
## Product Information

Application	WB
Host	Rabbit
Clonality	Polyclonal

## Additional Information

Dilution	WB~~WB: 1:2000-5000
Format	PBS, pH 7.4, containing 0.09% (W/V) sodium azide as Preservative and 50% Glycerol.
Storage Conditions	-20°C

## Images



Western blot analysis of Bovine Serum Albumin, Rabbit pAb diluted at 1) 1:2000 2) 1:5000. Secondary antibody was diluted at 1:20000

Please note: All products are 'FOR RESEARCH USE ONLY. NOT FOR USE IN DIAGNOSTIC OR THERAPEUTIC PROCEDURES'.