

Pan Methyl Lysine Polyclonal Antibody

Catalog # AP63401

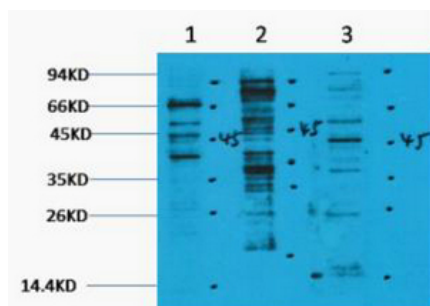
Product Information

Application	WB
Reactivity	All Species
Host	Rabbit
Clonality	Polyclonal

Additional Information

Dilution	WB~~WB: 1:1000-2000
Format	PBS, pH 7.4, containing 0.09% (W/V) sodium azide as Preservative and 50% Glycerol.
Storage Conditions	-20°C

Images



Western blot analysis of 1) Hela, 2) 3T3, 3) Rat Brain tissue, diluted at 1:2000.. Secondary antibody was diluted at 1:20000

Please note: All products are 'FOR RESEARCH USE ONLY. NOT FOR USE IN DIAGNOSTIC OR THERAPEUTIC PROCEDURES'.