

Histone H2B (Phospho Ser32) Polyclonal Antibody

Catalog # AP63421

Product Information

Application	WB
Primary Accession	Q96A08 , P33778 , P62807
Reactivity	Human, Mouse, Rat
Host	Rabbit
Clonality	Polyclonal
Calculated MW	14167

Additional Information

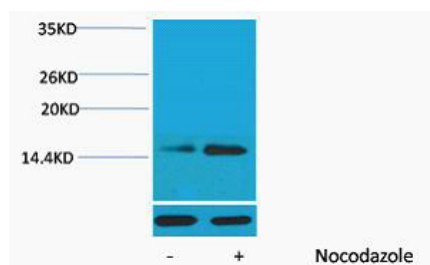
Gene ID	255626
Other Names	HIST1H2BA; TSH2B; Histone H2B type 1-A; Histone H2B, testis; Testis-specific histone H2B; HIST1H2BB; H2BFF; Histone H2B type 1-B; Histone H2B.1; Histone H2B.f; H2B/f; HIST1H2BC; H2BFL; HIST1H2BE; H2BFH; HIST1H2BF; H2BFG; HIST1H2BG; H2BFA; HIST1H2BI; H2BFK; Histone H2B type 1-C/E/F/G/I; Histone H2B.1 A; Histone H2B.a; H2B/a; Histone H2B.g; H2B/g; Histone H2B.h; H2B/h; Histone H2B.k; H2B/k; Histone H2B.l; H2B/l
Dilution	WB~~WB: 1:500-1000
Format	PBS, pH 7.4, containing 0.09% (W/V) sodium azide as Preservative and 50% Glycerol.
Storage Conditions	-20°C

Protein Information

Name	H2BC1 (HGNC:18730)
Function	Variant histone specifically required to direct the transformation of dissociating nucleosomes to protamine in male germ cells (By similarity). Entirely replaces classical histone H2B prior nucleosome to protamine transition and probably acts as a nucleosome dissociating factor that creates a more dynamic chromatin, facilitating the large-scale exchange of histones (By similarity). Core component of nucleosome (By similarity). Nucleosomes wrap and compact DNA into chromatin, limiting DNA accessibility to the cellular machineries which require DNA as a template (By similarity). Histones thereby play a central role in transcription regulation, DNA repair, DNA replication and chromosomal stability (By similarity). DNA accessibility is regulated via a complex set of post-translational modifications of histones, also called histone code, and nucleosome remodeling (By similarity). Also found in fat cells, its function and the presence of post-translational modifications specific to such cells are still unclear (PubMed: 21249133).

Cellular Location	Nucleus {ECO:0000250 UniProtKB:P70696}. Chromosome {ECO:0000250 UniProtKB:P70696}
Tissue Location	Mainly expressed in testis, and the corresponding protein is also present in mature sperm (at protein level). Also found in some fat cells.

Images



Western blot analysis of extracts from HeLa cells, untreated (-) or treated, 1:5000.. Secondary antibody was diluted at 1:20000 cells nucleus extracted by Minute TM Cytoplasmic and Nuclear Fractionation kit (SC-003, Invent biotech, MN, USA).

Please note: All products are 'FOR RESEARCH USE ONLY. NOT FOR USE IN DIAGNOSTIC OR THERAPEUTIC PROCEDURES'.