

# EPG5 Polyclonal Antibody

Catalog # AP63519

## Product Information

---

<b>Application</b>	WB, IHC-P
<b>Primary Accession</b>	<a href="#">Q9HCE0</a>
<b>Reactivity</b>	Human, Mouse, Rat
<b>Host</b>	Rabbit
<b>Clonality</b>	Polyclonal
<b>Calculated MW</b>	292481

## Additional Information

---

<b>Gene ID</b>	57724
<b>Other Names</b>	EPG5; KIAA1632; Ectopic P granules protein 5 homolog
<b>Dilution</b>	WB~~WB: 1:1000-2000 IHC: 1:200-500 IHC-P~~WB: 1:1000-2000 IHC: 1:200-500
<b>Format</b>	PBS, pH 7.4, containing 0.09% (W/V) sodium azide as Preservative and 50% Glycerol.
<b>Storage Conditions</b>	-20°C

## Protein Information

---

<b>Name</b>	EPG5
<b>Synonyms</b>	KIAA1632
<b>Function</b>	Involved in autophagy. May play a role in a late step of autophagy, such as clearance of autophagosomal cargo. Plays a key role in innate and adaptive immune response triggered by unmethylated cytidine-phosphate-guanosine (CpG) dinucleotides from pathogens, and mediated by the nucleotide-sensing receptor TLR9. It is necessary for the translocation of CpG dinucleotides from early endosomes to late endosomes and lysosomes, where TLR9 is located (PubMed: <a href="#">29130391</a> ).
<b>Cellular Location</b>	Cytoplasm, perinuclear region. Lysosome

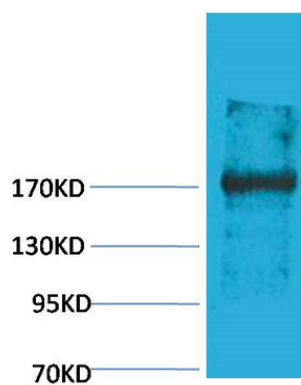
## Background

---

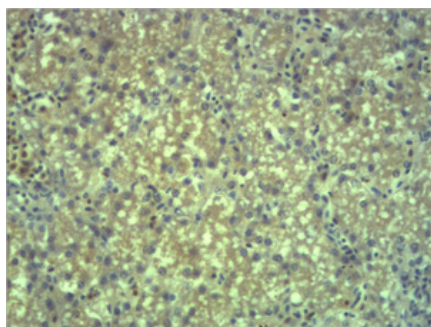
Involved in autophagy. May play a role in a late step of autophagy, such as clearance of autophagosomal cargo.

## Images

---



Western blot analysis of Rat Liver Tissue using EPG5 Polyclonal Antibody.. Secondary antibody was diluted at 1:20000



Immunohistochemical analysis of paraffin-embedded Mouse Liver Tissue using EPG5 Polyclonal Antibody.

Please note: All products are 'FOR RESEARCH USE ONLY. NOT FOR USE IN DIAGNOSTIC OR THERAPEUTIC PROCEDURES'.