

TLR13 Polyclonal Antibody

Catalog # AP63531

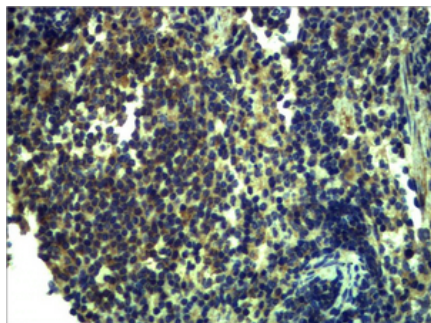
Product Information

Application	IHC-P
Reactivity	Human, Mouse, Rat
Host	Rabbit
Clonality	Polyclonal

Additional Information

Dilution	IHC-P~~N/A
Format	PBS, pH 7.4, containing 0.09% (W/V) sodium azide as Preservative and 50% Glycerol.
Storage Conditions	-20°C

Images



Immunohistochemical analysis of paraffin-embedded Mouse Spleen Tissue using TLR13 Polyclonal Antibody.

Please note: All products are 'FOR RESEARCH USE ONLY. NOT FOR USE IN DIAGNOSTIC OR THERAPEUTIC PROCEDURES'.