

IGFN1 Polyclonal Antibody

Catalog # AP63543

Product Information

Application	WB, IHC-P
Primary Accession	Q86VF2
Reactivity	Human, Mouse, Rat
Host	Rabbit
Clonality	Polyclonal
Calculated MW	137763

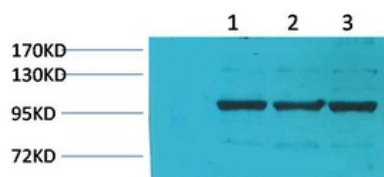
Additional Information

Gene ID	91156
Other Names	Immunoglobulin-like and fibronectin type III domain-containing protein 1; EEF1A2-binding protein 1; KY-interacting protein 1
Dilution	WB~~WB: 1:2000-5000 IHC: 1:200-500 IHC-P~~WB: 1:2000-5000 IHC: 1:200-500
Format	PBS, pH 7.4, containing 0.09% (W/V) sodium azide as Preservative and 50% Glycerol.
Storage Conditions	-20°C

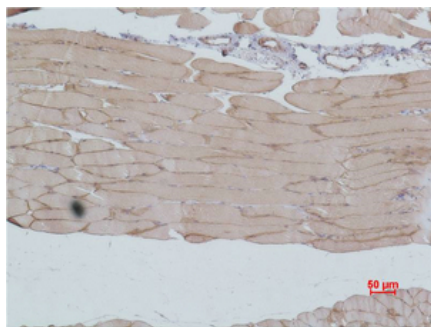
Protein Information

Name	IGFN1
Synonyms	EEF1A2BP1, KYIP1
Cellular Location	Nucleus. Cytoplasm, myofibril, sarcomere, Z line
Tissue Location	Expressed in skeletal muscle.

Images



Western blot analysis of 1) Pig Skeletal MuscleTissue, 2) Rat Skeletal Muscle Tissue, 3) Rat Skeletal Muscle Tissue using IGFN1 Polyclonal Antibody.. Secondary antibody was diluted at 1:20000



Immunohistochemical analysis of paraffin-embedded Mouse Skeletal Muscle Tissue using IGFN1 Polyclonal Antibody.

Please note: All products are 'FOR RESEARCH USE ONLY. NOT FOR USE IN DIAGNOSTIC OR THERAPEUTIC PROCEDURES'.