

# IL1R Antibody (C-term E487)

Purified Rabbit Polyclonal Antibody (Pab)

Catalog # AP6355B

## Product Information

---

<b>Application</b>	WB, E
<b>Primary Accession</b>	<a href="#">P14778</a>
<b>Other Accession</b>	<a href="#">Q02955</a>
<b>Reactivity</b>	Human, Rat, Mouse
<b>Predicted</b>	Rat
<b>Host</b>	Rabbit
<b>Clonality</b>	Polyclonal
<b>Isotype</b>	Rabbit IgG
<b>Clone Names</b>	RB06973
<b>Calculated MW</b>	65402
<b>Antigen Region</b>	474-503

## Additional Information

---

<b>Gene ID</b>	3554
<b>Other Names</b>	Interleukin-1 receptor type 1, IL-1R-1, IL-1RT-1, IL-1RT1, CD121 antigen-like family member A, Interleukin-1 receptor alpha, IL-1R-alpha, Interleukin-1 receptor type I, p80, CD121a, Interleukin-1 receptor type 1, membrane form, mIL-1R1, mIL-1RI, Interleukin-1 receptor type 1, soluble form, sIL-1R1, sIL-1RI, IL1R1, IL1R, IL1RA, IL1RT1
<b>Target/Specificity</b>	This IL1R antibody is generated from rabbits immunized with a KLH conjugated synthetic peptide between 474-503 amino acids from the C-terminal region of human IL1R.
<b>Dilution</b>	WB~~1:1000 E~~Use at an assay dependent concentration.
<b>Format</b>	Purified polyclonal antibody supplied in PBS with 0.09% (W/V) sodium azide. This antibody is purified through a protein A column, followed by peptide affinity purification.
<b>Storage</b>	Maintain refrigerated at 2-8°C for up to 2 weeks. For long term storage store at -20°C in small aliquots to prevent freeze-thaw cycles.
<b>Precautions</b>	IL1R Antibody (C-term E487) is for research use only and not for use in diagnostic or therapeutic procedures.

## Protein Information

---

<b>Name</b>	IL1R1
-------------	-------

<b>Synonyms</b>	IL1R, IL1RA, IL1RT1
<b>Function</b>	Receptor for IL1A, IL1B and IL1RN (PubMed: <a href="#">2950091</a> , PubMed: <a href="#">37315560</a> ). After binding to interleukin-1 associates with the coreceptor IL1RAP to form the high affinity interleukin-1 receptor complex which mediates interleukin-1-dependent activation of NF-kappa- B, MAPK and other pathways. Signaling involves the recruitment of adapter molecules such as TOLLIP, MYD88, and IRAK1 or IRAK2 via the respective TIR domains of the receptor/coreceptor subunits. Binds ligands with comparable affinity and binding of antagonist IL1RN prevents association with IL1RAP to form a signaling complex. Involved in IL1B-mediated costimulation of IFNG production from T-helper 1 (Th1) cells (PubMed: <a href="#">10653850</a> ).
<b>Cellular Location</b>	Membrane; Single- pass type I membrane protein. Cell membrane. Secreted
<b>Tissue Location</b>	Expressed in T-helper cell subsets. Preferentially expressed in T-helper 1 (Th1) cells.

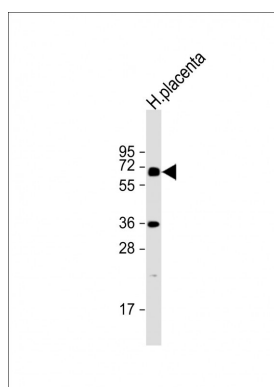
## Background

IL1R is a member of the interleukin 1 receptor family. An experiment with transient gene expression demonstrated that this receptor was incapable of binding to interleukin 1 alpha and interleukin 1 beta with high affinity. IL1R is a receptor for interleukin 1 family member 9 (IL1F9). Binding to the agonist leads to the activation of NF-kappa-B. The gene for this protein and four other interleukin 1 receptor family genes, including interleukin 1 receptor, type I (IL1R1), interleukin 1 receptor, type II (IL1R2), interleukin 1 receptor-like 1 (IL1RL1), and interleukin 18 receptor 1 (IL18R1), form a cytokine receptor gene cluster in a region mapped to chromosome 2q12.

## References

Debets, R., et al., J. Immunol. 167(3):1440-1446 (2001).  
Dale, M., et al., Genomics 57(1):177-179 (1999).  
Torigoe, K., et al., J. Biol. Chem. 272(41):25737-25742 (1997).  
Lovenberg, T.W., et al., J. Neuroimmunol. 70(2):113-122 (1996).

## Images



Anti-IL1R Antibody (C-term E487) at 1:2000 dilution + human placenta lysate Lysates/proteins at 20 µg per lane. Secondary Goat Anti-Rabbit IgG, (H+L), Peroxidase conjugated at 1/10000 dilution. Predicted band size : 65 kDa Blocking/Dilution buffer: 5% NFDM/TBST.

Please note: All products are 'FOR RESEARCH USE ONLY. NOT FOR USE IN DIAGNOSTIC OR THERAPEUTIC PROCEDURES'.