

# Pan Methylated Lysine Monoclonal Antibody(Mix)

Catalog # AP63569

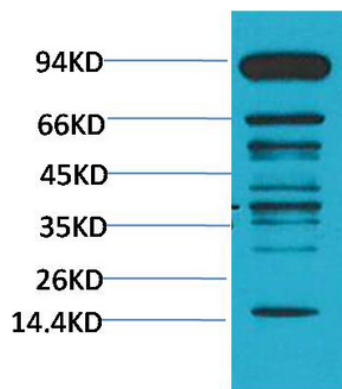
## Product Information

<b>Application</b>	WB, IHC-P
<b>Reactivity</b>	All Species
<b>Host</b>	Mouse
<b>Clonality</b>	Monoclonal

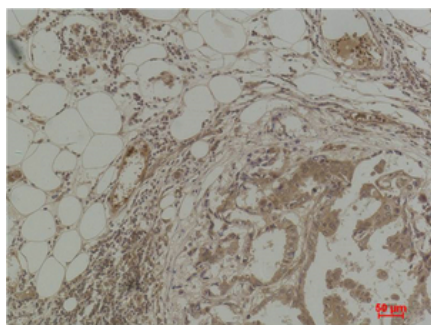
## Additional Information

<b>Dilution</b>	WB~~WB: 1:1000-2000 IHC: 1:200-500 IHC-P~~N/A
<b>Format</b>	PBS, pH 7.4, containing 0.09% (W/V) sodium azide as Preservative and 50% Glycerol.
<b>Storage Conditions</b>	-20°C

## Images



Western blot analysis of Hela using Pan Methylated Lysine Monoclonal Antibody.



Immunohistochemical analysis of paraffin-embedded Human Breast Carcinoma using Pan Methylated Lysine Monoclonal Antibody.