

Stat5a Polyclonal Antibody

Catalog # AP63587

Product Information

Application	WB, IHC-P
Primary Accession	P42229
Reactivity	Human
Host	Rabbit
Clonality	Polyclonal
Calculated MW	90647

Additional Information

Gene ID	6776
Other Names	STAT5A; STAT5; Signal transducer and activator of transcription 5A
Dilution	WB~~Western Blot: 1/500 - 1/2000.IHC-p:1:50-300. Not yet tested in other applications. IHC-P~~N/A
Format	PBS, pH 7.4, containing 0.09% (W/V) sodium azide as Preservative and 50% Glycerol.
Storage Conditions	-20°C

Protein Information

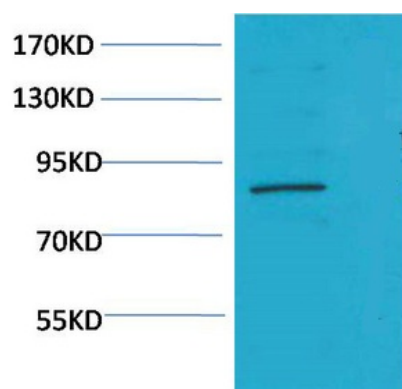
Name	STAT5A
Synonyms	STAT5
Function	Carries out a dual function: signal transduction and activation of transcription. Mediates cellular responses to the cytokine KITLG/SCF and other growth factors. Mediates cellular responses to ERBB4. May mediate cellular responses to activated FGFR1, FGFR2, FGFR3 and FGFR4. Binds to the GAS element and activates PRL- induced transcription. Regulates the expression of milk proteins during lactation.
Cellular Location	Cytoplasm. Nucleus. Note=Translocated into the nucleus in response to phosphorylation

Background

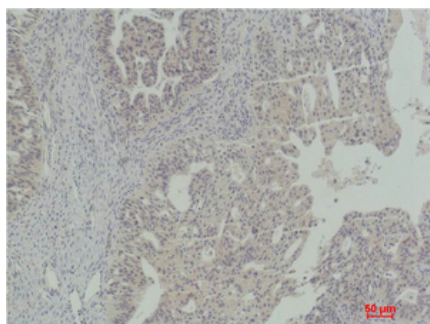
Carries out a dual function: signal transduction and activation of transcription. Mediates cellular responses to the cytokine KITLG/SCF and other growth factors. Mediates cellular responses to ERBB4. May mediate cellular responses to activated FGFR1, FGFR2, FGFR3 and FGFR4. Binds to the GAS element and activates

PRL-induced transcription. Regulates the expression of milk proteins during lactation.

Images



Western blot analysis of K562 using Stat5a Polyclonal Antibody.. Secondary antibody was diluted at 1:20000



Immunohistochemical analysis of paraffin-embedded Human Ovarian Carcinoma using Stat5a Polyclonal Antibody.

Please note: All products are 'FOR RESEARCH USE ONLY. NOT FOR USE IN DIAGNOSTIC OR THERAPEUTIC PROCEDURES'.