

Acetyl Lysine Monoclonal Antibody(10B10)

Catalog # AP63588

Product Information

Application	WB, IHC-P
Reactivity	All Species
Host	Mouse
Clonality	Monoclonal

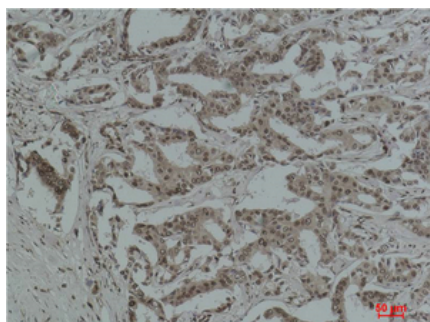
Additional Information

Dilution	WB~~WB: 1:1000-2000 IHC: 1:200-500 IHC-P~~WB: 1:1000-2000 IHC: 1:200-500
Format	PBS, pH 7.4, containing 0.09% (W/V) sodium azide as Preservative and 50% Glycerol.
Storage Conditions	-20°C

Images



Western blot analysis of 1) Mouse Brain Tissue, 2) HeLa, 3) HeLa+TSA Treated using Acetyl Lysine Monoclonal Antibody.



Immunohistochemical analysis of paraffin-embedded Human Breast Carcinoma using Acetyl Lysine Monoclonal Antibody.