

# STAT5b Polyclonal Antibody

Catalog # AP63602

## Product Information

---

<b>Application</b>	WB, IHC-P
<b>Primary Accession</b>	<a href="#">P51692</a>
<b>Reactivity</b>	Human, Rat, Mouse
<b>Host</b>	Rabbit
<b>Clonality</b>	Polyclonal
<b>Calculated MW</b>	89866

## Additional Information

---

<b>Gene ID</b>	6777
<b>Other Names</b>	Signal transducer and activator of transcription 5B
<b>Dilution</b>	WB~~WB: 1:500-1:2000 IHC: 1:50-1:200 IHC-P~~WB: 1:500-1:2000 IHC: 1:50-1:200
<b>Format</b>	Liquid in PBS containing 50% glycerol, 0.5% BSA and 0.09% (W/V) sodium azide.
<b>Storage Conditions</b>	-20°C

## Protein Information

---

<b>Name</b>	STAT5B
<b>Function</b>	Carries out a dual function: signal transduction and activation of transcription (PubMed: <a href="#">29844444</a> ). Mediates cellular responses to the cytokine KITLG/SCF and other growth factors. Binds to the GAS element and activates PRL-induced transcription. Positively regulates hematopoietic/erythroid differentiation.
<b>Cellular Location</b>	Cytoplasm. Nucleus. Note=Translocated into the nucleus in response to phosphorylation.

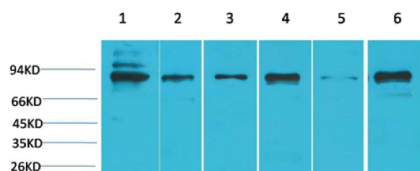
## Background

---

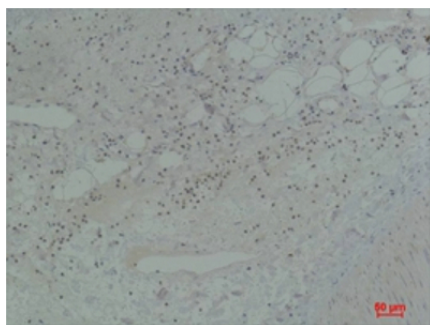
Carries out a dual function: signal transduction and activation of transcription. Mediates cellular responses to the cytokine KITLG/SCF and other growth factors. Binds to the GAS element and activates PRL-induced transcription. Positively regulates hematopoietic/erythroid differentiation.

## Images

---



Western blot analysis of 1) K562, 2) HeLa, 3) 3T3, 4) Mouse Heart Tissue, 5) PC12, 6) Rat Heart Tissue with STAT5bRabbit pAb diluted at 1:2,000.



Immunohistochemical analysis of paraffin-embedded Human Spleen Tissue using STAT5bRabbit pAb diluted at 1:200.

Please note: All products are 'FOR RESEARCH USE ONLY. NOT FOR USE IN DIAGNOSTIC OR THERAPEUTIC PROCEDURES'.