

# STAT5a Polyclonal Antibody

Catalog # AP63603

## Product Information

---

<b>Application</b>	WB, IHC-P
<b>Primary Accession</b>	<a href="#">P42229</a>
<b>Reactivity</b>	Rat, Mouse
<b>Host</b>	Rabbit
<b>Clonality</b>	Polyclonal
<b>Calculated MW</b>	90647

## Additional Information

---

<b>Gene ID</b>	6776
<b>Other Names</b>	Signal transducer and activator of transcription 5A
<b>Dilution</b>	WB~~Western Blot: 1/500 - 1/2000.IHC-p:1:50-300. Not yet tested in other applications. IHC-P~~N/A
<b>Format</b>	Liquid in PBS containing 50% glycerol, 0.5% BSA and 0.09% (W/V) sodium azide.
<b>Storage Conditions</b>	-20°C

## Protein Information

---

<b>Name</b>	STAT5A
<b>Synonyms</b>	STAT5
<b>Function</b>	Carries out a dual function: signal transduction and activation of transcription. Mediates cellular responses to the cytokine KITLG/SCF and other growth factors. Mediates cellular responses to ERBB4. May mediate cellular responses to activated FGFR1, FGFR2, FGFR3 and FGFR4. Binds to the GAS element and activates PRL- induced transcription. Regulates the expression of milk proteins during lactation.
<b>Cellular Location</b>	Cytoplasm. Nucleus. Note=Translocated into the nucleus in response to phosphorylation

## Background

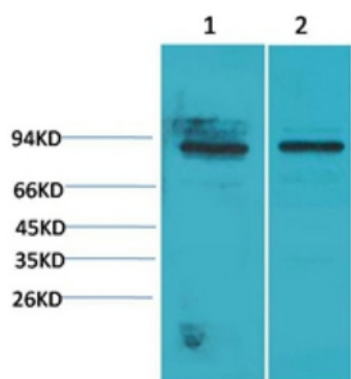
---

Carries out a dual function: signal transduction and activation of transcription. Mediates cellular responses to the cytokine KITLG/SCF and other growth factors. Mediates cellular responses to ERBB4. May mediate cellular responses to activated FGFR1, FGFR2, FGFR3 and FGFR4. Binds to the GAS element and activates

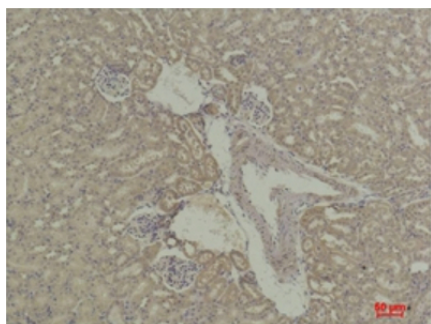
PRL-induced transcription. Regulates the expression of milk proteins during lactation.

## Images

---



Western blot analysis of 1) Mouse Heart Tissue, 2) Rat Heart Tissue with STAT5a Rabbit pAb diluted at 1:2,000.



Immunohistochemical analysis of paraffin-embedded Mouse Kidney Tissue using STAT5a Rabbit pAb diluted at 1:500.

Please note: All products are 'FOR RESEARCH USE ONLY. NOT FOR USE IN DIAGNOSTIC OR THERAPEUTIC PROCEDURES'.