

# Phosphotyrosine Monoclonal Antibody(2C1)

Catalog # AP63605

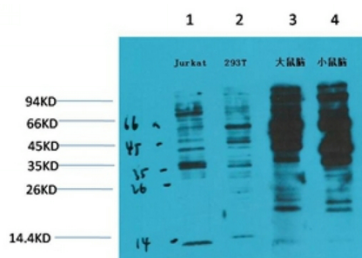
## Product Information

|                    |             |
|--------------------|-------------|
| <b>Application</b> | WB, IHC-P   |
| <b>Reactivity</b>  | All Species |
| <b>Host</b>        | Mouse       |
| <b>Clonality</b>   | Monoclonal  |

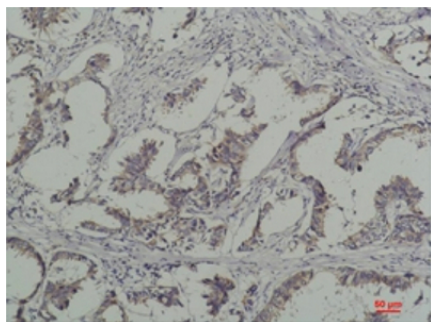
## Additional Information

|                           |   |
|---------------------------|---|
| <b>Dilution</b>           | WB~~Western Blot: 1/500 - 1/2000. Immunohistochemistry: 1/100 - 1/300. ELISA: 1/40000. Not yet tested in other applications. IHC-P~~N/A |
| <b>Format</b>             | Liquid in PBS containing 50% glycerol, 0.5% BSA and 0.09% (W/V) sodium azide.   |
| <b>Storage Conditions</b> | -20°C   |

## Images



Western blot analysis of 1) Jurkat, 2) 293T, 3) Rat Brain Tissue, 4) Mouse Brain Tissue with Phosphotyrosine Mouse mAb diluted at 1:2,000



Immunohistochemical analysis of paraffin-embedded Human Breast Carcinoma using Phosphotyrosine Mouse mAb diluted at 1:200.

Please note: All products are 'FOR RESEARCH USE ONLY. NOT FOR USE IN DIAGNOSTIC OR THERAPEUTIC PROCEDURES'.