

# IL3RB Antibody (C-term V759)

Purified Rabbit Polyclonal Antibody (Pab)

Catalog # AP6360b

## Product Information

---

<b>Application</b>	WB, E
<b>Primary Accession</b>	<a href="#">P32927</a>
<b>Reactivity</b>	Human
<b>Host</b>	Rabbit
<b>Clonality</b>	Polyclonal
<b>Isotype</b>	Rabbit IgG
<b>Clone Names</b>	RB06990
<b>Calculated MW</b>	97336
<b>Antigen Region</b>	744-773

## Additional Information

---

<b>Gene ID</b>	1439
<b>Other Names</b>	Cytokine receptor common subunit beta, CDw131, GM-CSF/IL-3/IL-5 receptor common beta subunit, CD131, CSF2RB, IL3RB, IL5RB
<b>Target/Specificity</b>	This IL3R antibody is generated from rabbits immunized with a KLH conjugated synthetic peptide between 744-773 amino acids from the C-terminal region of human IL3R.
<b>Dilution</b>	WB~~1:1000 E~~Use at an assay dependent concentration.
<b>Format</b>	Purified polyclonal antibody supplied in PBS with 0.09% (W/V) sodium azide. This antibody is purified through a protein A column, followed by peptide affinity purification.
<b>Storage</b>	Maintain refrigerated at 2-8°C for up to 2 weeks. For long term storage store at -20°C in small aliquots to prevent freeze-thaw cycles.
<b>Precautions</b>	IL3RB Antibody (C-term V759) is for research use only and not for use in diagnostic or therapeutic procedures.

## Protein Information

---

<b>Name</b>	CSF2RB
<b>Synonyms</b>	IL3RB, IL5RB
<b>Function</b>	Cell surface receptor that plays a role in immune response and controls the production and differentiation of hematopoietic progenitor cells into

lineage-restricted cells. Acts by forming an heterodimeric receptor through interaction with different partners such as IL3RA, IL5RA or CSF2RA (PubMed:[1495999](#)). In turn, participates in various signaling pathways including interleukin-3, interleukin-5 and granulocyte-macrophage colony-stimulating factor/CSF2 pathways. In unstimulated conditions, interacts constitutively with JAK1 and ligand binding leads to JAK1 stimulation and subsequent activation of the JAK- STAT pathway (PubMed:[9516124](#)).

#### Cellular Location

Membrane; Single-pass type I membrane protein.

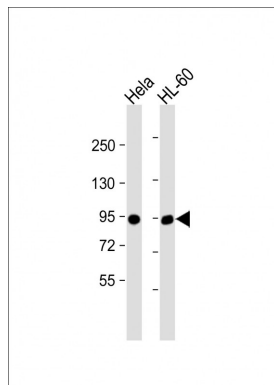
## Background

Purified rabbit polyclonal antibody supplied in PBS with 0.09% (W/V) sodium azide. This antibody is first purified by protein G affinity chromatography. Then, the antibody fraction is peptide affinity purified in a 2-step procedure with the control and phosphorylated peptides. The phospho-specific antibody is eluted with high and low pH buffers and neutralized immediately, followed by dialysis against PBS.

## References

Murphy, J.M., et al., J. Biol. Chem. 279(25):26500-26508 (2004).  
McClure, B.J., et al., Blood 101(4):1308-1315 (2003).  
Scibek, J.J., et al., Anal. Biochem. 307(2):258-265 (2002).  
Blake, T.J., et al., J. Leukoc. Biol. 72(6):1246-1255 (2002).  
Evans, C.A., et al., Blood 100(9):3164-3174 (2002).

## Images



All lanes : Anti-IL3RB Antibody (C-term) at 1:1000 dilution  
Lane 1: Hela whole cell lysate Lane 2: HL-60 whole cell lysate  
Lysates/proteins at 20 µg per lane. Secondary Goat Anti-Rabbit IgG, (H+L), Peroxidase conjugated at 1/10000 dilution. Predicted band size : 97 kDa  
Blocking/Dilution buffer: 5% NFDM/TBST.

Please note: All products are 'FOR RESEARCH USE ONLY. NOT FOR USE IN DIAGNOSTIC OR THERAPEUTIC PROCEDURES'.