

# Bombesin Receptor 2 Polyclonal Antibody

Catalog # AP63624

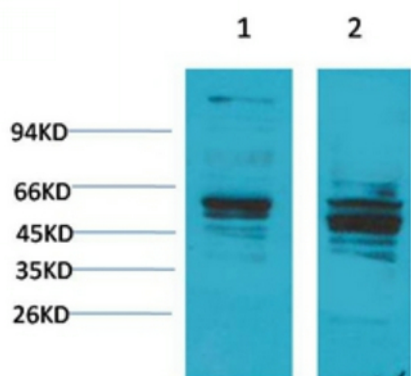
## Product Information

<b>Application</b>	WB, IHC-P
<b>Reactivity</b>	Rat, Mouse
<b>Host</b>	Rabbit
<b>Clonality</b>	Polyclonal

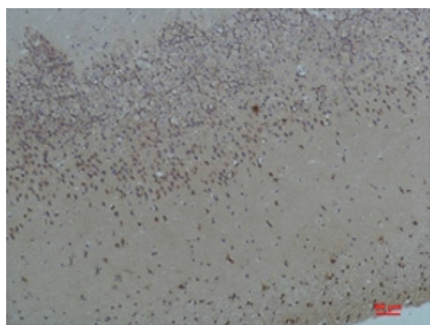
## Additional Information

<b>Dilution</b>	WB~~Western Blot: 1/500 - 1/2000. Immunohistochemistry: 1/100 - 1/300. ELISA: 1/40000. Not yet tested in other applications. IHC-P~~N/A
<b>Format</b>	Liquid in PBS containing 50% glycerol, 0.5% BSA and 0.09% (W/V) sodium azide.
<b>Storage Conditions</b>	-20°C

## Images



Western blot analysis of 1) Mouse Brain Tissue, 2) Rat Brain Tissue with Bombesin Receptor 2 Rabbit pAb diluted at 1:2,000.



Immunohistochemical analysis of paraffin-embedded Rat Brain Tissue using Bombesin Receptor 2 Rabbit pAb diluted at 1:200.