

CaV α 2 δ 1 Polyclonal Antibody

Catalog # AP63628

Product Information

Application	WB, IHC-P
Primary Accession	P54289
Reactivity	Rat
Host	Rabbit
Clonality	Polyclonal
Calculated MW	124568

Additional Information

Gene ID	781
Other Names	Voltage-dependent calcium channel subunit alpha-2/delta-1 (Voltage-gated calcium channel subunit alpha-2/delta-1) [Cleaved into: Voltage-dependent calcium channel subunit alpha-2-1; Voltage-dependent calcium channel subunit delta-1]
Dilution	WB~~Western Blot: 1/500 - 1/2000. Immunohistochemistry: 1/100 - 1/300. ELISA: 1/40000. Not yet tested in other applications. IHC-P~~N/A
Format	Liquid in PBS containing 50% glycerol, 0.5% BSA and 0.09% (W/V) sodium azide.
Storage Conditions	-20°C

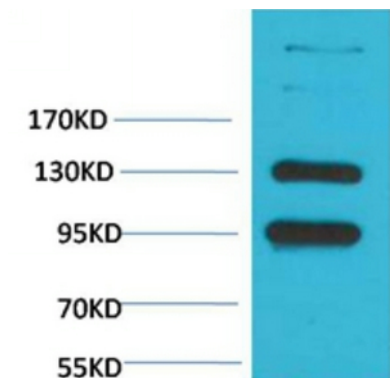
Protein Information

Name	CACNA2D1
Synonyms	CACNL2A, CCHL2A, MHS3
Function	The alpha-2/delta subunit of voltage-dependent calcium channels regulates calcium current density and activation/inactivation kinetics of the calcium channel (PubMed: 35293990). Plays an important role in excitation-contraction coupling (By similarity).
Cellular Location	Membrane; Single-pass type I membrane protein. Cell membrane
Tissue Location	Isoform 1 is expressed in skeletal muscle. Isoform 2 is expressed in the central nervous system. Isoform 2, isoform 4 and isoform 5 are expressed in neuroblastoma cells. Isoform 3, isoform 4 and isoform 5 are expressed in the aorta.

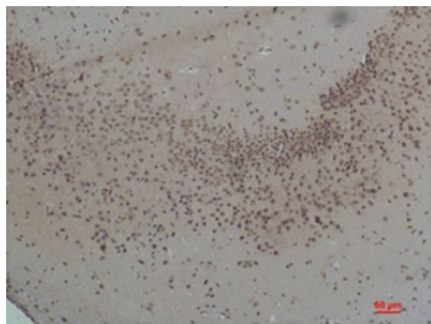
Background

The alpha-2/delta subunit of voltage-dependent calcium channels regulates calcium current density and activation/inactivation kinetics of the calcium channel. Plays an important role in excitation-contraction coupling (By similarity).

Images



Western blot analysis of Rat Brain Tissue with CaVα2δ1 Rabbit pAb diluted at 1:2,000.



Immunohistochemical analysis of paraffin-embedded Rat Brain Tissue using CaV α2δ1 Rabbit pAb diluted at 1:200.

Please note: All products are 'FOR RESEARCH USE ONLY. NOT FOR USE IN DIAGNOSTIC OR THERAPEUTIC PROCEDURES'.