

# Cyclophilin B Monoclonal Antibody(1B3)

Catalog # AP63643

## Product Information

---

<b>Application</b>	WB, IHC-P
<b>Primary Accession</b>	<a href="#">P23284</a>
<b>Reactivity</b>	Human, Rat, Mouse
<b>Host</b>	Mouse
<b>Clonality</b>	Monoclonal
<b>Calculated MW</b>	23743

## Additional Information

---

<b>Gene ID</b>	5479
<b>Other Names</b>	PPIB; CYPB; Peptidyl-prolyl cis-trans isomerase B; PPIase B; CYP-S1; Cyclophilin B; Rotamase B; S-cyclophilin; SCYLP
<b>Dilution</b>	WB~~WB 1:1000-2000, IHC 1:100-200 IHC-P~~WB 1:1000-2000, IHC 1:100-200
<b>Format</b>	Liquid in PBS containing 50% glycerol, 0.5% BSA and 0.09% (W/V) sodium azide.
<b>Storage Conditions</b>	-20°C

## Protein Information

---

<b>Name</b>	PPIB
<b>Synonyms</b>	CYPB
<b>Function</b>	PPIase that catalyzes the cis-trans isomerization of proline imidic peptide bonds in oligopeptides and may therefore assist protein folding.
<b>Cellular Location</b>	Virion. Note=(Microbial infection)

## Background

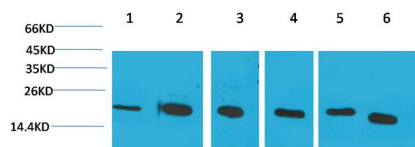
---

PPIase that catalyzes the cis-trans isomerization of proline imidic peptide bonds in oligopeptides and may therefore assist protein folding.

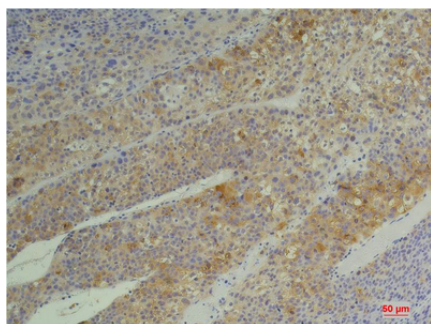
## Images

---

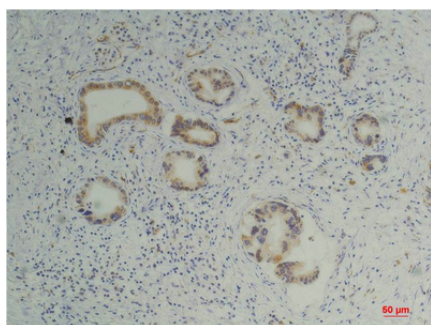
Western blot analysis of 1) Hela, 2)Jurkat, 3)293T, 4)Rat



Liver Tissue, 5) 3T3, 6) HepG2 with Cyclophilin B Mouse mAb diluted at 1:2,000.



Immunohistochemical analysis of paraffin-embedded Human Hepatocarcinoma using Cyclophilin B Mouse mAb diluted at 1:200.



Immunohistochemical analysis of paraffin-embedded Human Pancreatic Carcinoma using Cyclophilin B Mouse mAb diluted at 1:200.

Please note: All products are 'FOR RESEARCH USE ONLY. NOT FOR USE IN DIAGNOSTIC OR THERAPEUTIC PROCEDURES'.