

I κ B β Monoclonal Antibody(1F3)

Catalog # AP63649

Product Information

Application	IHC-P, IF
Primary Accession	Q15653
Reactivity	Human, Rat, Mouse
Host	Mouse
Clonality	Monoclonal
Calculated MW	37771

Additional Information

Gene ID	4793
Other Names	NFKBIB; IKBB; TRIP9; NF-kappa-B inhibitor beta; NF-kappa-BIB; I-kappa-B-beta; IkB-B; IkB-beta; IkappaBbeta; Thyroid receptor-interacting protein 9; TR-interacting protein 9; TRIP-9
Dilution	IHC-P~~N/A IF~~1:50~200
Format	Liquid in PBS containing 50% glycerol, 0.5% BSA and 0.09% (W/V) sodium azide.
Storage Conditions	-20°C

Protein Information

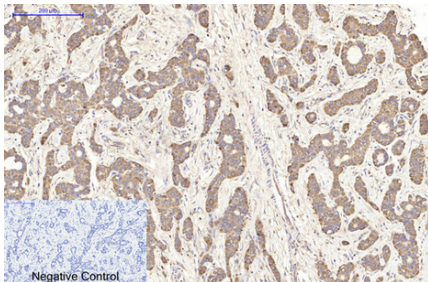
Name	NFKBIB
Synonyms	IKBB, TRIP9
Function	Inhibits NF-kappa-B by complexing with and trapping it in the cytoplasm. However, the unphosphorylated form resynthesized after cell stimulation is able to bind NF-kappa-B allowing its transport to the nucleus and protecting it to further NFKBIA-dependent inactivation. Association with inhibitor kappa B-interacting NKIRAS1 and NKIRAS2 prevent its phosphorylation rendering it more resistant to degradation, explaining its slower degradation.
Cellular Location	Cytoplasm. Nucleus.
Tissue Location	Expressed in all tissues examined.

Background

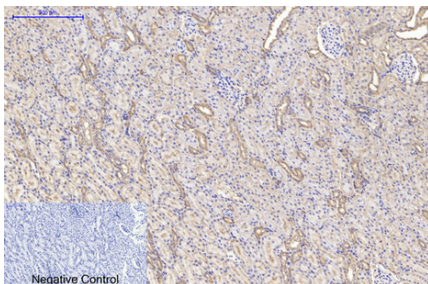
Inhibits NF-kappa-B by complexing with and trapping it in the cytoplasm. However, the unphosphorylated

form resynthesized after cell stimulation is able to bind NF-kappa-B allowing its transport to the nucleus and protecting it to further NFKBIA- dependent inactivation. Association with inhibitor kappa B- interacting NKIRAS1 and NKIRAS2 prevent its phosphorylation rendering it more resistant to degradation, explaining its slower degradation.

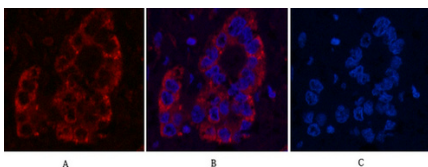
Images



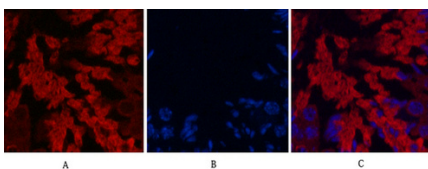
Immunohistochemical analysis of paraffin-embedded Human-liver-cancer tissue. 1,IkB β Monoclonal Antibody(1F3) was diluted at 1:200(4°C,overnight). 2, Sodium citrate pH 6.0 was used for antibody retrieval(>98°C,20min). 3,Secondary antibody was diluted at 1:200(room temperature, 30min). Negative control was used by secondary antibody only.



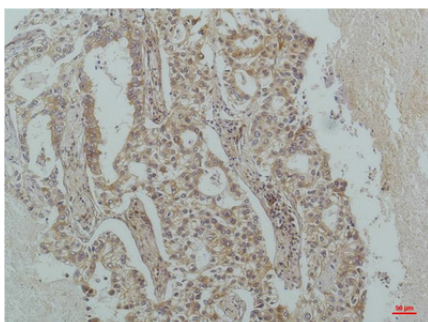
Immunohistochemical analysis of paraffin-embedded Rat-kidney tissue. 1,IkB β Monoclonal Antibody(1F3) was diluted at 1:200(4°C,overnight). 2, Sodium citrate pH 6.0 was used for antibody retrieval(>98°C,20min). 3,Secondary antibody was diluted at 1:200(room temperature, 30min). Negative control was used by secondary antibody only.



Immunofluorescence analysis of Human-liver-cancer tissue. 1,IkB β Monoclonal Antibody(1F3)(red) was diluted at 1:200(4°C,overnight). 2, Cy3 labeled Secondary antibody was diluted at 1:300(room temperature, 50min).3, Picture B: DAPI(blue) 10min. Picture A:Target. Picture B: DAPI. Picture C: merge of A+B

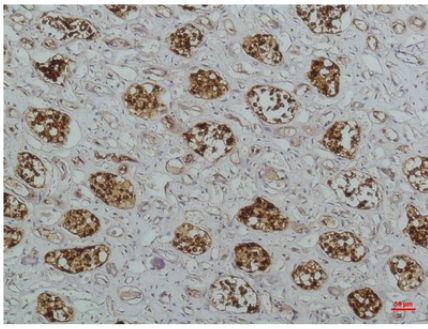


Immunofluorescence analysis of Mouse-testis tissue. 1,IkB β Monoclonal Antibody(1F3)(red) was diluted at 1:200(4°C,overnight). 2, Cy3 labeled Secondary antibody was diluted at 1:300(room temperature, 50min).3, Picture B: DAPI(blue) 10min. Picture A:Target. Picture B: DAPI. Picture C: merge of A+B



Immunohistochemical analysis of paraffin-embedded Human Lung Carcinoma using IkB β (mAb diluted at 1:200.

Immunohistochemical analysis of paraffin-embedded Human Kidney Tissue using IkB β Mouse mAb diluted at 1:200.



Please note: All products are 'FOR RESEARCH USE ONLY. NOT FOR USE IN DIAGNOSTIC OR THERAPEUTIC PROCEDURES'.