

# GALR2 Polyclonal Antibody

Catalog # AP63684

## Product Information

---

|                   |                        |
|-------------------|------------------------|
| Application       | WB                     |
| Primary Accession | <a href="#">O43603</a> |
| Reactivity        | Human, Rat, Mouse      |
| Host              | Rabbit                 |
| Clonality         | Polyclonal             |
| Calculated MW     | 41700                  |

## Additional Information

---

|                    |   |
|--------------------|---|
| Gene ID            | 8811  |
| Other Names        | GALR2; GALNR2; Galanin receptor type 2; GAL2-R; GALR-2                        |
| Dilution           | WB~~WB 1:500-1000   |
| Format             | Liquid in PBS containing 50% glycerol, 0.5% BSA and 0.09% (W/V) sodium azide. |
| Storage Conditions | -20°C   |

## Protein Information

---

|                   |   |
|-------------------|---|
| Name              | GALR2   |
| Synonyms          | GALNR2  |
| Function          | Receptor for the hormone galanin and GALP. Receptor for the hormone spexin-1 (PubMed: <a href="#">24517231</a> ). The activity of this receptor is mediated by G proteins that activate the phospholipase C/protein kinase C pathway (via G(q)) and that inhibit adenylyl cyclase (via G(i)). |
| Cellular Location | Cell membrane; Multi-pass membrane protein.   |
| Tissue Location   | Expressed abundantly within the central nervous system in both hypothalamus and hippocampus. In peripheral tissues, the strongest expression was observed in heart, kidney, liver, and small intestine  |

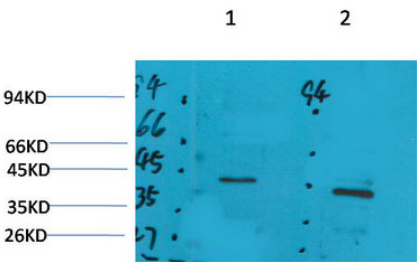
## Background

---

Receptor for the hormone galanin and GALP. Receptor for the hormone spexin-1 (PubMed: [24517231](#)). The activity of this receptor is mediated by G proteins that activate the phospholipase C/protein kinase C pathway (via G(q)) and that inhibit adenylyl cyclase (via G(i)).

Images

Western blot analysis of 1) Rat Brain Tissue, 2) Mouse Brain Tissue with GALR2 Rabbit pAb diluted at 1:2,000.



Please note: All products are 'FOR RESEARCH USE ONLY. NOT FOR USE IN DIAGNOSTIC OR THERAPEUTIC PROCEDURES'.